



QHYCCD

All-in-one COLDMOS Astronomy Camera

QHY16803A

User's Manual Rev. 1.0



This document is an online document. You may save this PDF file or print it out.

QHYCCD reserves the right to change this user manual without prior notice.

Package Contents

Please confirm that the package contains the following items:

12V power cable	1
12V car power adapter	1
USB cable	1
Grounding cable	1
T-ring(2 inch to M54/0.75)	1
Drying tube	1
Desiccant	1
USB hub bypass board	1
Screw driver for M2 hexagon screw	1
Screw driver for M3 hexagon screw	1
Screws for fixing filter frame and filter	many
Inspection report	1
Waterproof plastic box	1
OHYOAG-M	1
Camera	1

Optional accessories

12V power adaptor (12V 6A)	1
Trigger cable	1
RS232 cable (1.5m)	1

Note that if the user wants to buy 12V power adapter by themselves, its output current is at least 3.5A, and the polarity must be center positive.

Table of Contents

01 Software Installation

02 Filter installation

03 Use QHY16803A in EZCAP_QT

04 Use QHY16803A on ASCOM platform

05 Use QHY16803A in FireCapture

06 Peripheral Ports on QHY16803A

07 FAQ

08 Camera Maintenance

09 Specifications

10 Mechanical Dimensions

11 Revision History

01 Software Installation

1. Download and install [ASCOM platform](#)

2. Download and install the [Camera Driver](#)

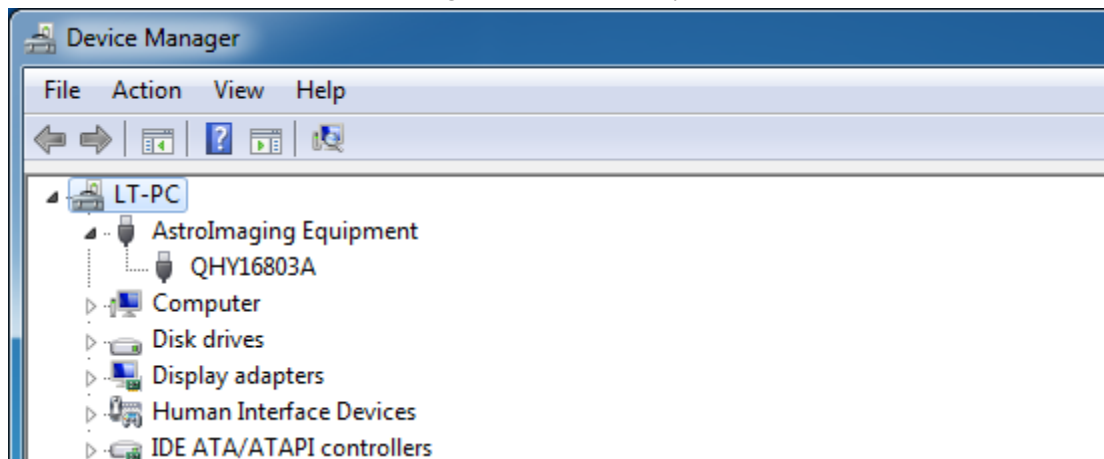
Note that when you run its driver setup program, you will be prompted to install camera driver, network card driver, and FTDI Serial port driver. Since IC16803A and QHY16803A use the same system driver and there's no network card in the QHY16803A, the network driver is actually no use.

3. Download and install the [ASCOM Capture Driver](#)

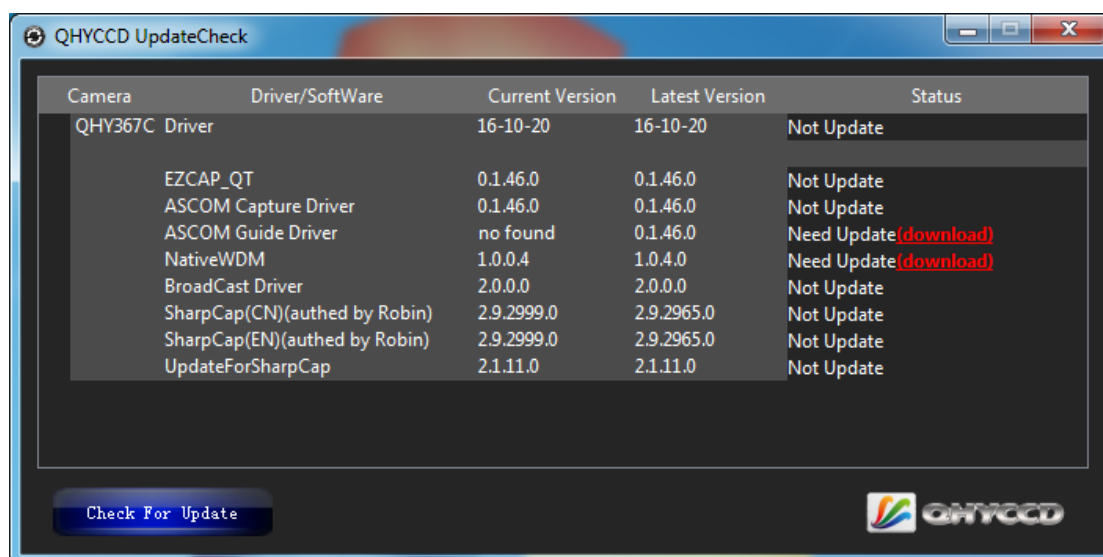
4. Download and install the [ASCOM Filters Plug](#) for the built-in filter wheel.

5. QHY16803A camera uses EZCAP_QT as the default capture software. Please download and install [EZCAP_QT](#).

6. Connect QHY16803A to your PC with USB2.0 cable. Connect your QHY16803A to 12V power supply (**Make sure 12V power supply is always connected when you use QHY16803A**). Turn the switch on. For the first time the system will find a new device and search the driver. You can keep skipping the online searching by clicking "Skip obtaining driver software from Windows Update" and the computer will find the drivers. After installation is complete successfully, you can find the device in the device manager as shown in the picture below.



7. QHYCCD has developed a software named [UpdateCheck](#) that can check if the drivers installed on your computer are the latest versions as well as update the drivers if needed. If the status of some driver is "Need Update", you can directly download its update package in this software freeing you from the inconvenience of looking for and downloading it from our website. Take QHY183C for example, you can see the drivers we need are the latest versions and don't need to be updated as shown in the following picture.



Note that after you downloading and installing the new drivers by using this software, be sure to pull the USB cable out and then plug it in to enable the new drivers.

02 Filter installation

QHY16803A contains a built-in 7-Hole 50mm filter wheel. Please follow the instructions below to install filters for it.

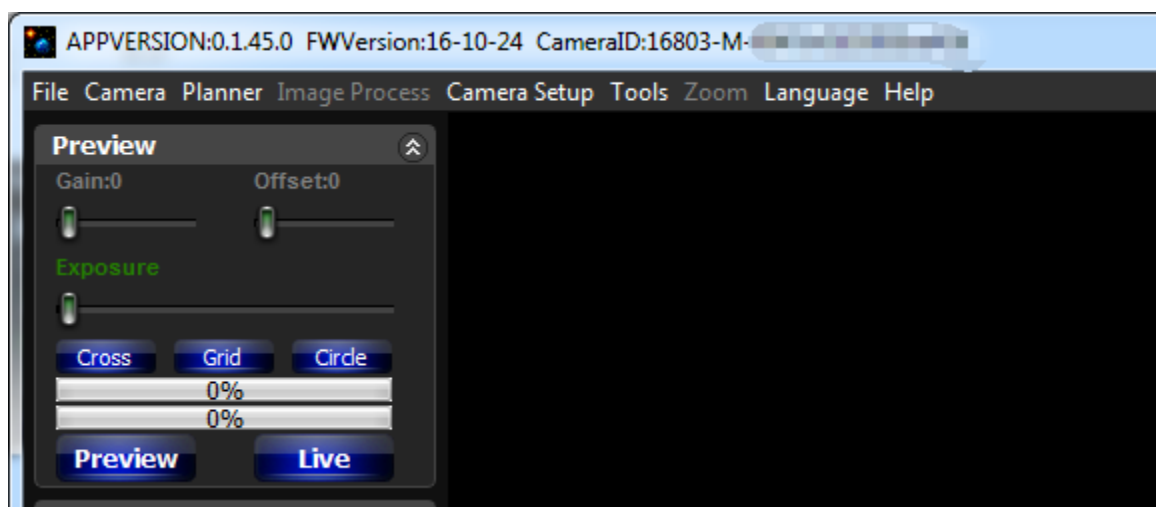
1. Use the screwdriver included in the box to remove the M3*12 screws on the topside of the camera.
2. You can see the filter wheel after opening the top cap. You can install 50mm filters and fix them with screws and washers. Please make sure that filters and screws used for fixing the filters do not touch the top cap and photoelectric position detector.
3. After you've finished installing the filters, you can turn on the camera and connect the camera to your PC with USB cable to make sure the filter wheel can work properly. Note that the filter wheel use photoelectric position detector to determine the position of the filter, so make sure you are not exposing the filter wheel to strong light when you are testing if it can work properly, otherwise the strong light may affect the photoelectric position detector.
4. Install the top cap.

Now we have finished installing filters, we are going to introduce how to use QHY16803A in EZCAP_QT, MAXIMDL, and Sequence Generator Pro.

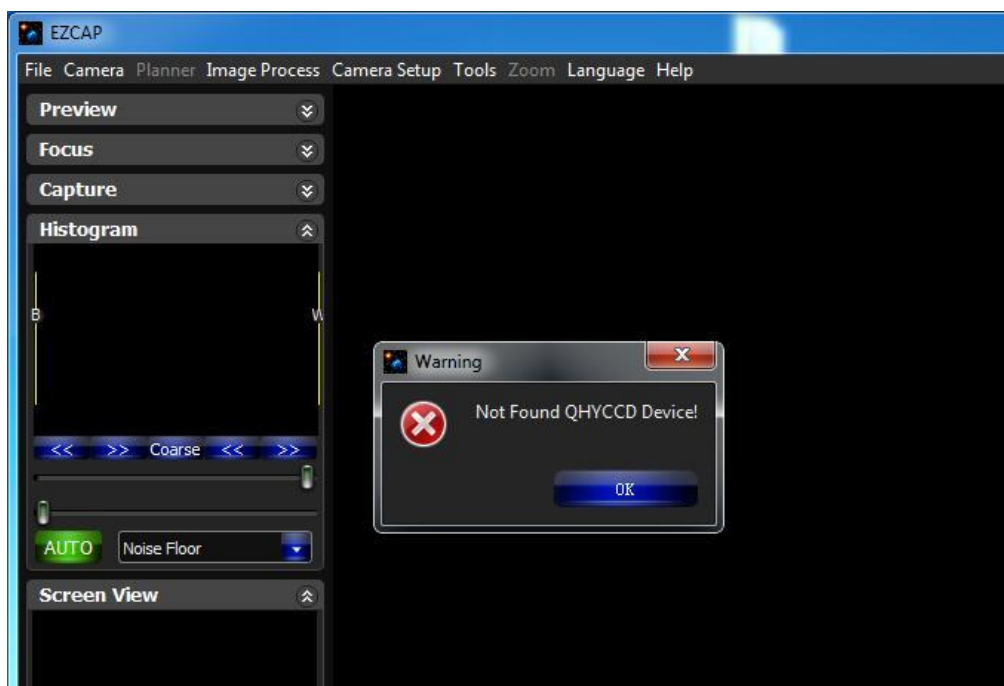
03 Use QHY16803A in EZCAP_QT

EZCAP_QT is the software developed by QHYCCD. This software has the basic capture function for QHYCCD deep sky cameras. You can use this QHY16803A camera with its built-in filter wheel in this software.

1. Install [EZCAP_QT](#)
2. Connect your QHY16803A to 12V power supply. Connect your QHY16803A to your computer with USB2.0 cable.
3. Run EZCAP_QT. Select "Connect" in Menu->Camera. If the camera is successfully connected. The title of EZCAP_QT will display the camera firmware version and the camera ID as shown below.



Before you click "connect", you have to make sure you can see QHY16803A in the device manager on Windows. Sometimes if you click "connect", you may see the warning shown in the picture below.

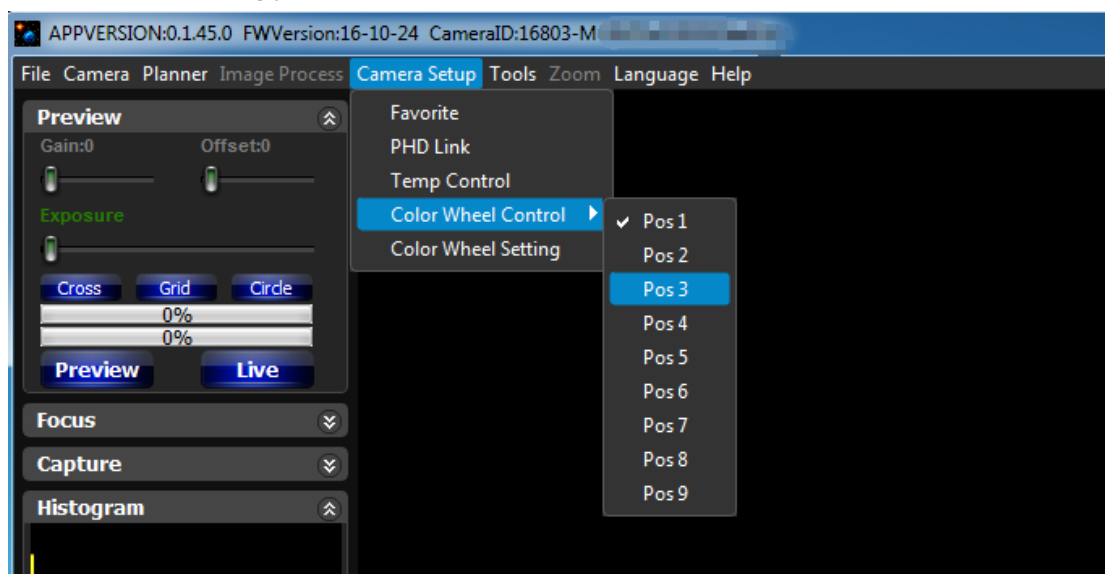


That doesn't necessarily mean that the camera and your computer are not connected. In this case, you can just wait for a minute and click 'connect' again, then you can see it will be connected successfully. This is because it usually takes a while to load its firmware into your computer.

4. In Menu->Camera Setup, Click "Temp Control" and set the CMOS sensor temperature. You can enable the "Auto Control" and set the target temperature. For example here we set the temperature to -10C. The CMOS temperature will come to -10C very fast (in about 2-3minute). If you want to close the TEC, you can select "TEC OFF". If you just want to set the TEC power but not the temperature. You can select "Manual" and then set the percent of the TEC power.



5. You can select which filter you are going to use by changing the position of filter wheel as shown in the following picture.



6. You can use the preview tab to do preview. And use the focus tools to do focus. Then use the capture tab to capture image.

7. In EZCAP_QT there is a planner for image tasking. You can capture a series images by using the table below.

The screenshot shows the 'Planner' window in EZCAP_QT. It features a table with 10 rows for task planning. The columns are: UseBIN, ExpTime(s), Repeat, CFW, Delay(s), Gain, Avg, SubBlack, and SubBias. All values in the table are currently set to 1 or 0. Below the table are buttons for 'Add Row', 'Save Table', and 'Load Table'. There is a 'Folder' label and a 'FileName' input field. A numeric keypad is present with buttons for NGC, M, IC, Clear, and digits 1-9, 0, (, and). To the right of the keypad are 'Start' and 'Force Stop' buttons. At the bottom, there are checkboxes for 'Capture DarkFrame', 'High Readout Speed', and 'Color Wheel Loop' (set to 2). The status at the bottom left is 'No Task'.

	UseBIN	ExpTime(s)	Repeat	CFW	Delay(s)	Gain	Avg	SubBlack	SubBias
1	<input checked="" type="checkbox"/>	1	1	1	0	0	0	0	0
2	<input type="checkbox"/>	1	1	1	0	0	0	0	0
3	<input type="checkbox"/>	1	1	1	0	0	0	0	0
4	<input type="checkbox"/>	1	1	1	0	0	0	0	0
5	<input type="checkbox"/>	1	1	1	0	0	0	0	0
6	<input type="checkbox"/>	1	1	1	0	0	0	0	0
7	<input type="checkbox"/>	1	1	1	0	0	0	0	0
8	<input type="checkbox"/>	1	1	1	0	0	0	0	0
9	<input type="checkbox"/>	1	1	1	0	0	0	0	0
10	<input type="checkbox"/>	1	1	1	0	0	0	0	0

Add Row Save Table Load Table

Folder

FileName

NGC 1 2 3
M 4 5 6
IC 7 8 9
Clear 0 ()

Start
Force Stop

☐ Capture DarkFrame
☐ High Readout Speed
☐ Color Wheel Loop 2

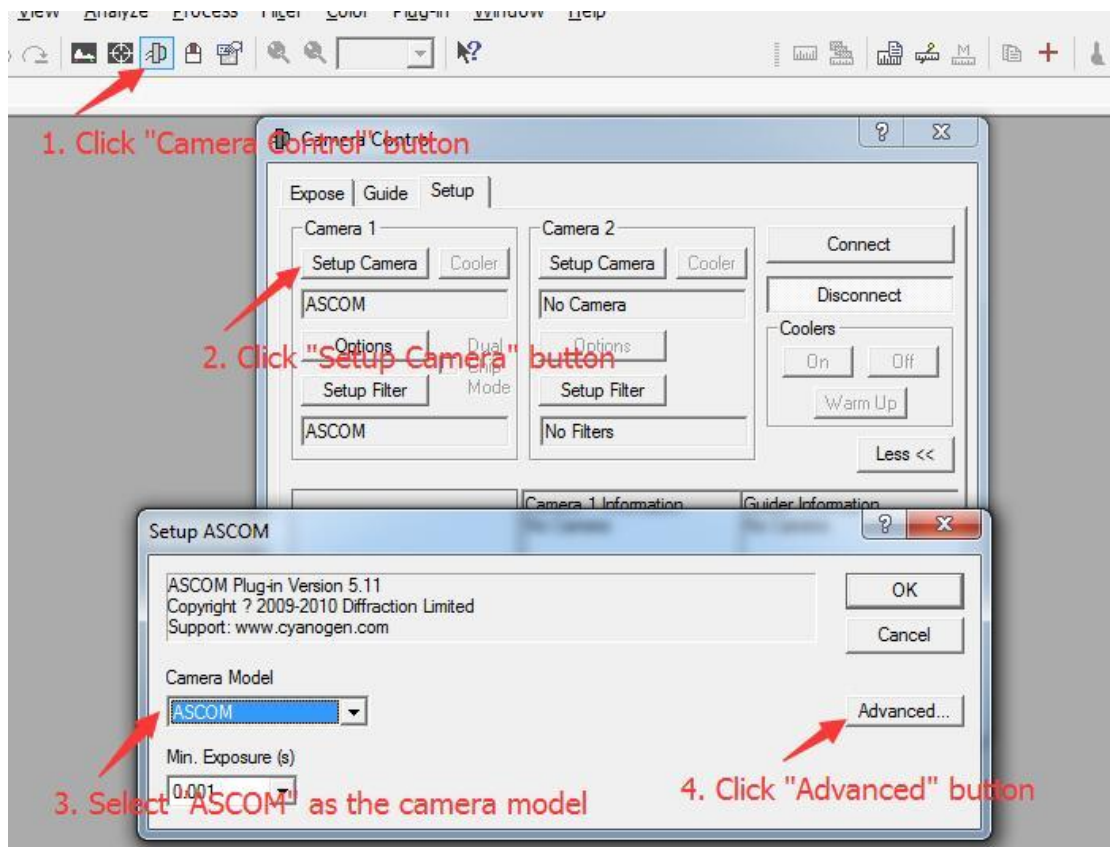
No Task

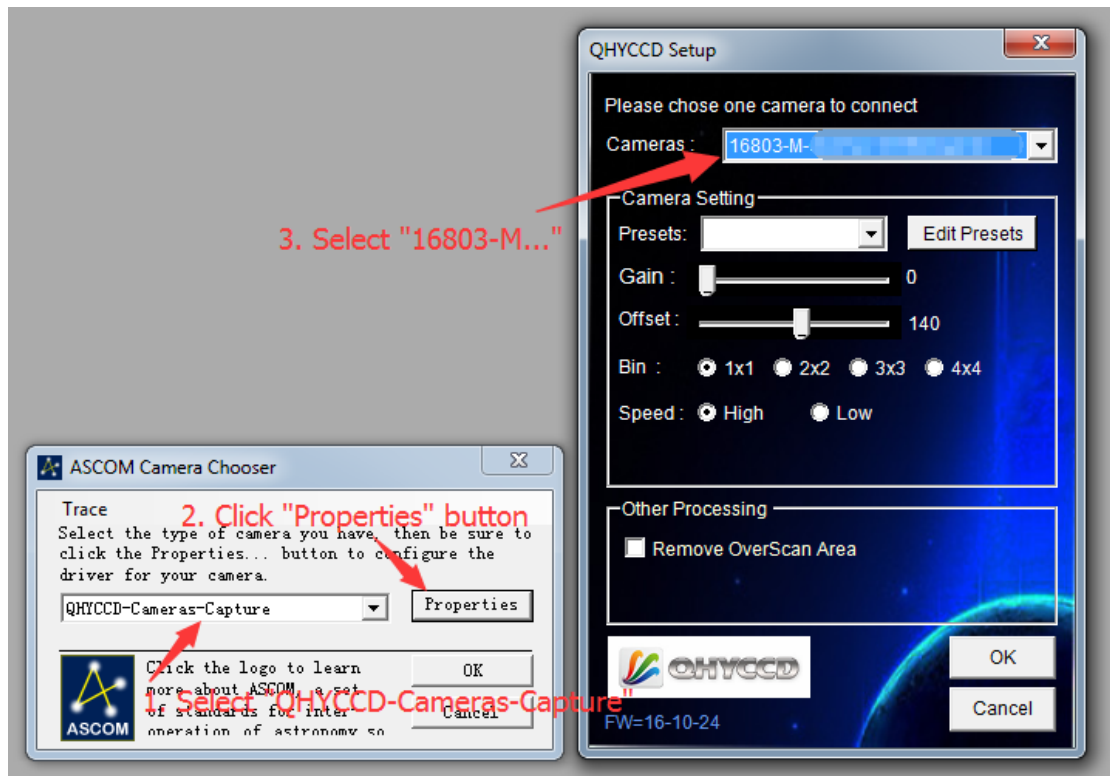
04 Use QHY16803A on ASCOM platform

You can connect many software that support ASCOM. Currently QHY16803A only supports normal ASCOM connection and does not support the ASCOM VIDEO connection. Please note that QHY16803A always transfers maximum bit depth by ASCOM to make the best DSO imaging performance. The image format is 16bit width and patch zero on low bit.

MaxIM DL

1. First you have to make sure that both ASCOM Platform and ASCOM driver have been installed. If not, please install it first.
2. Start MAXIMDL
3. Follow the instructions shown below to finish the setup.

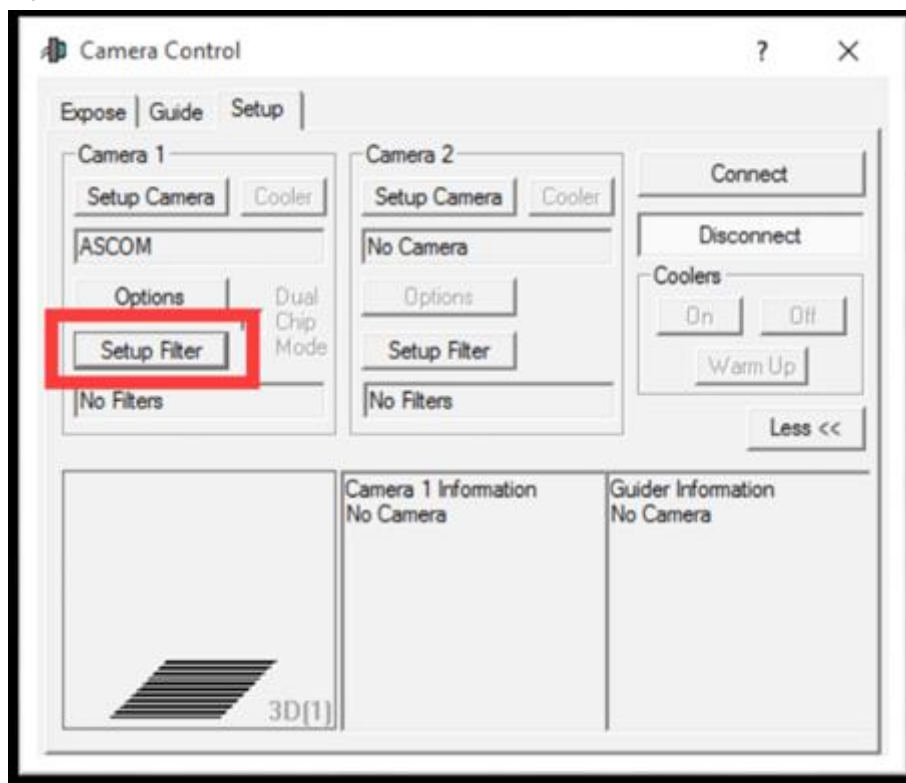


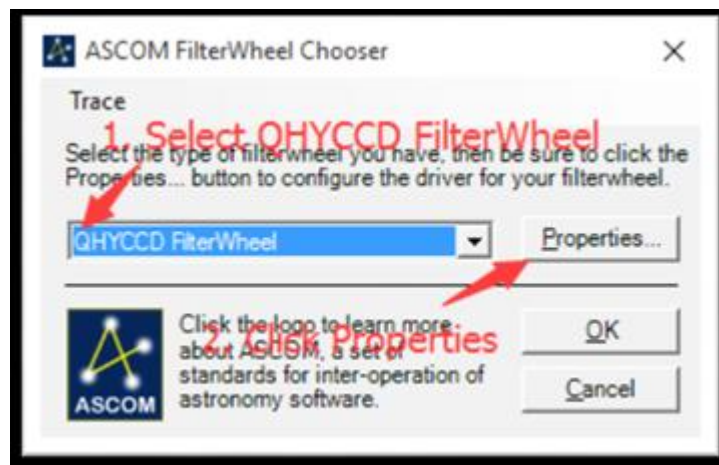
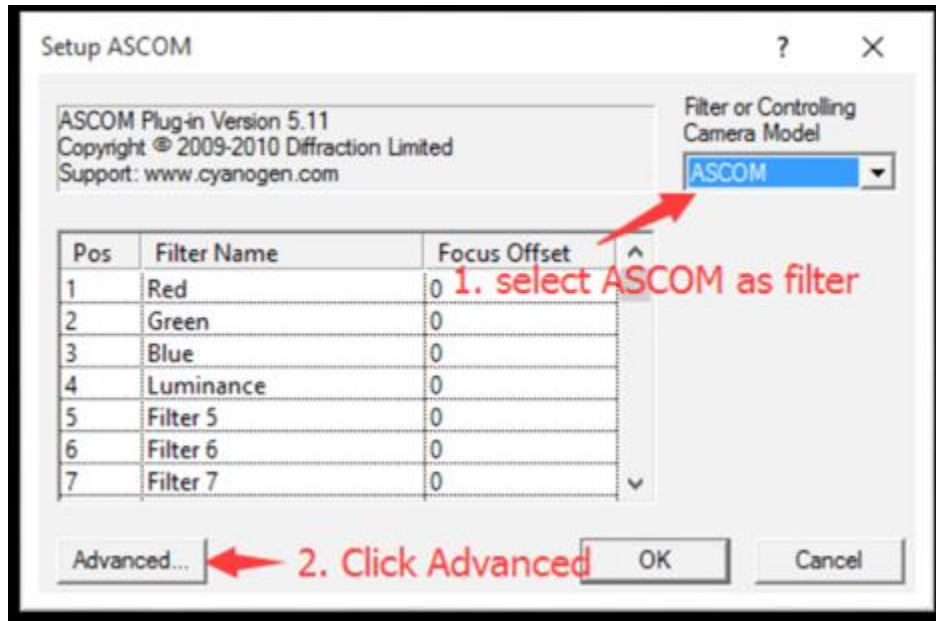


Normally, you can set the gain=1 and offset=10 to start. Keep clicking "Okay" to return to Camera Control window.

The following instructions are going to show you how to configure the built-in filter wheel in MAXIMDL.

Click "Setup Filter" in the Camera Control window.

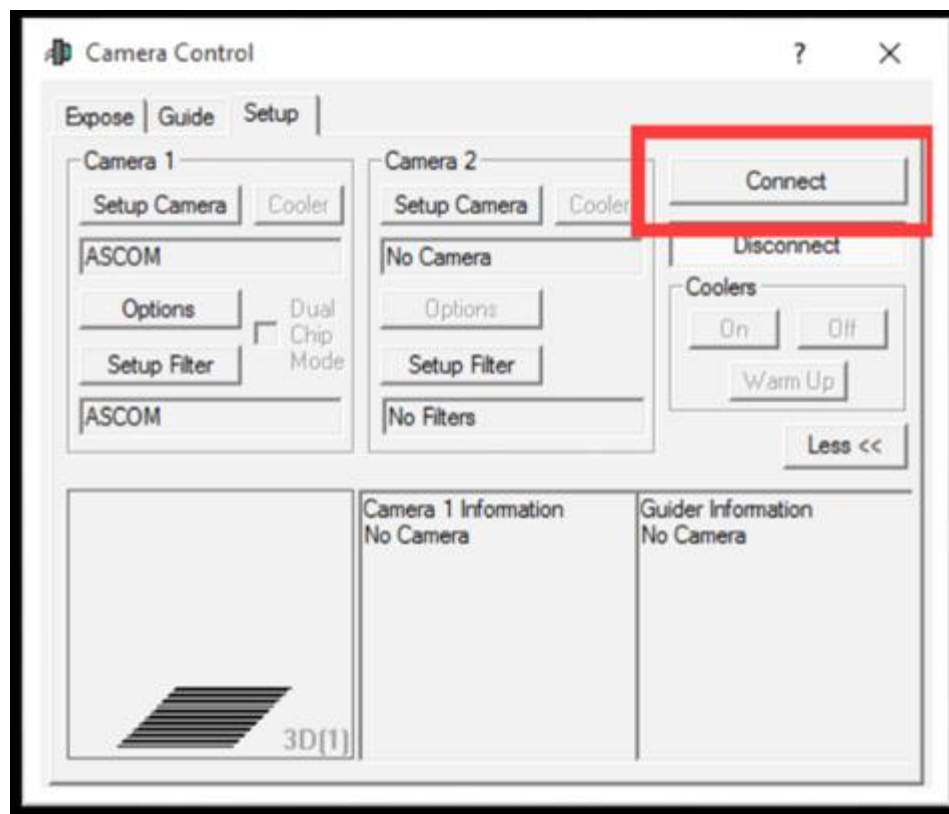


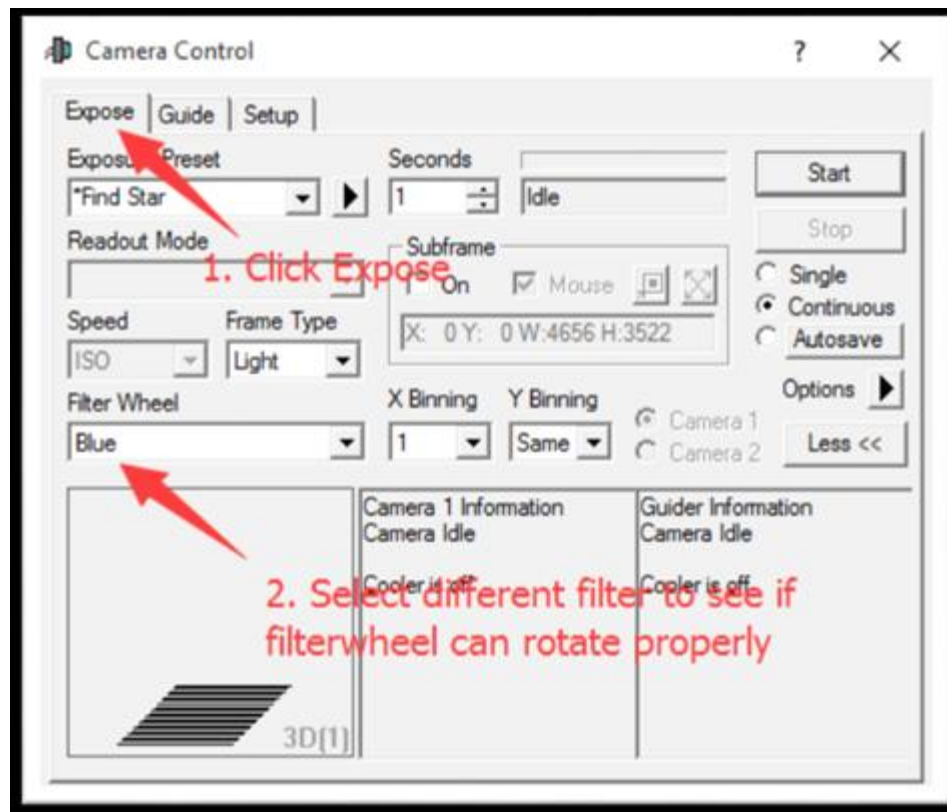


In the window shown below, you can set up your filter wheel.



Keep clicking "OK" to return to the Camera Control window. Click "Connect"



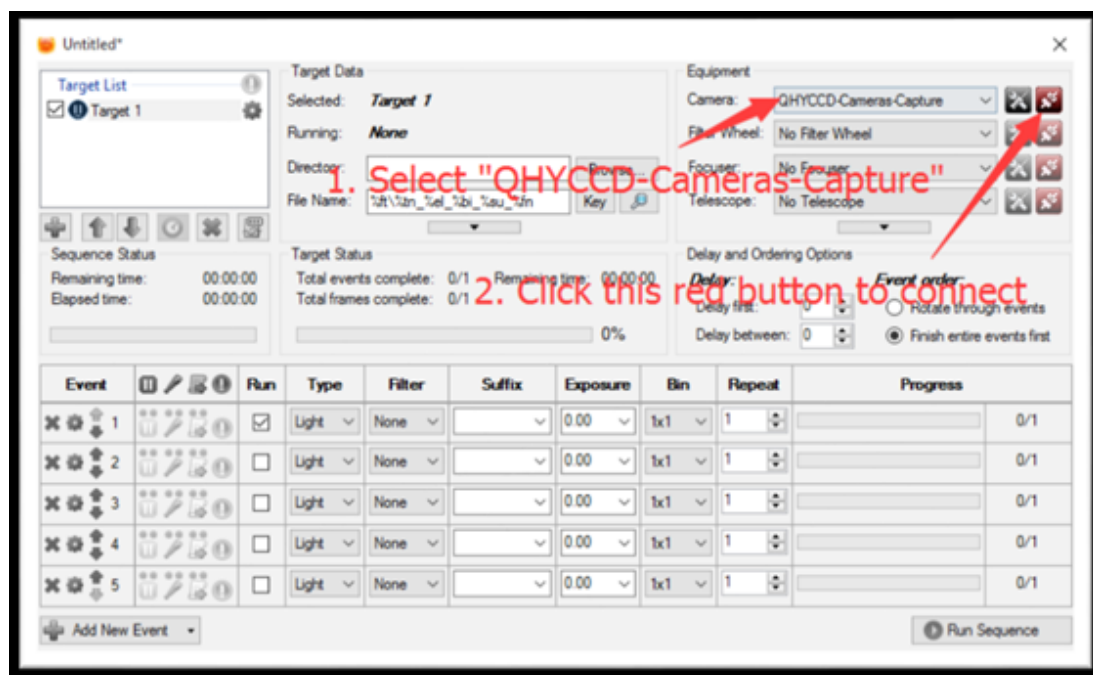
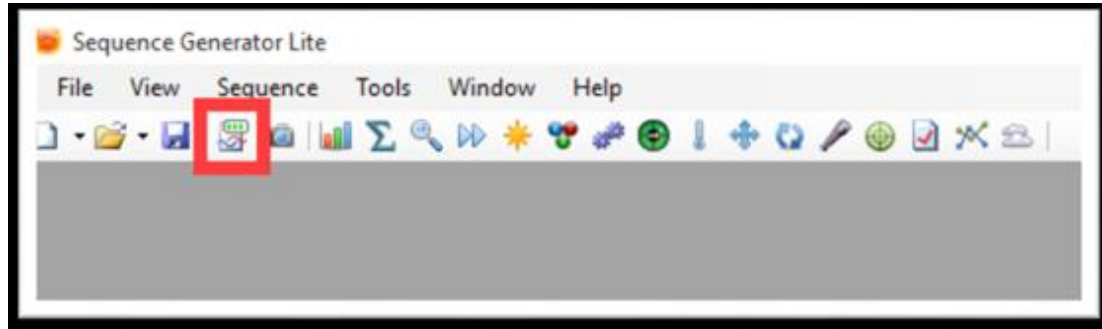


Sequence Generator Pro

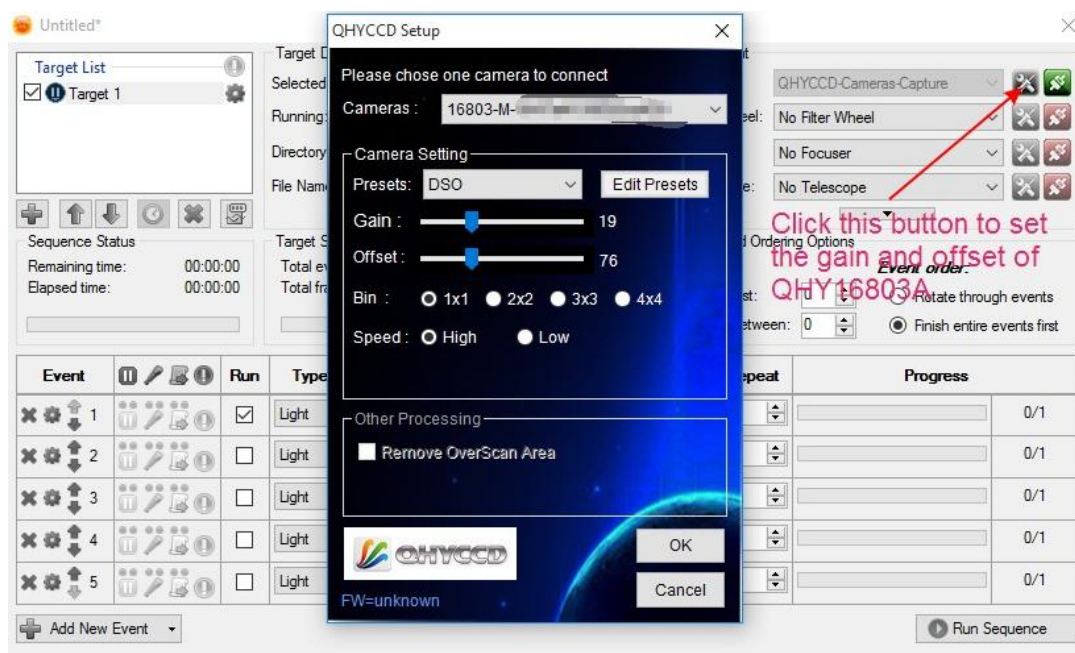
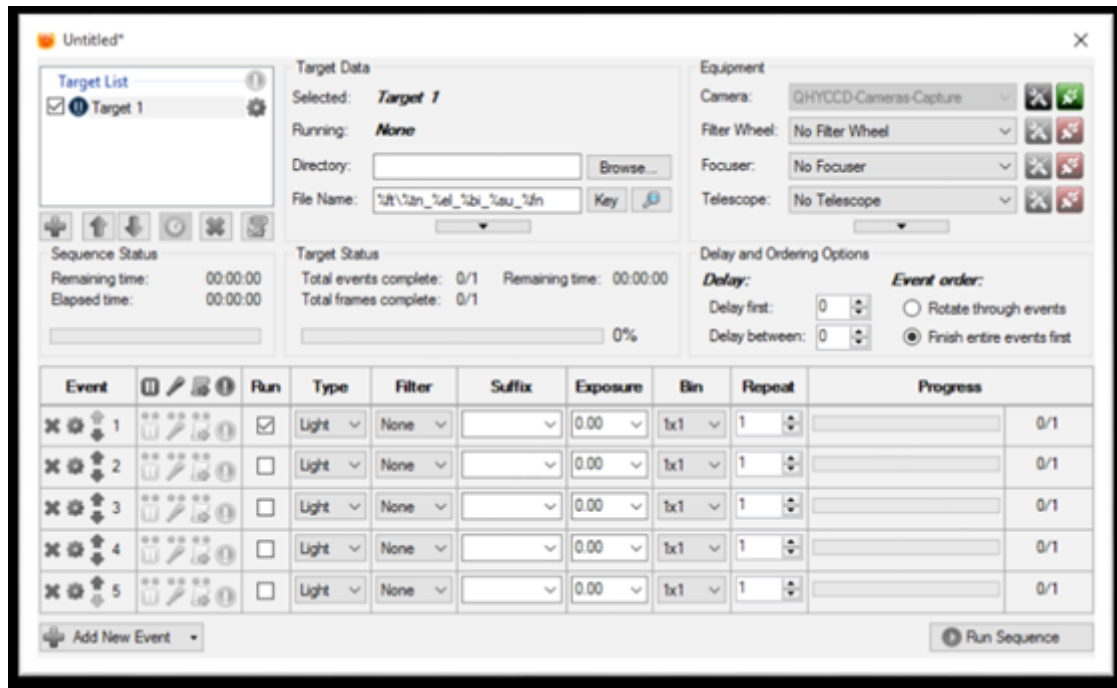
Sequence Generator Pro is an extremely powerful image capture suite. It can perform many complex tasks in order to meet your imaging needs. After you connect your gears and configure Sequence Generator Pro properly, you can go to sleep and see images in the morning.

To use QHY16803A in Sequence Generator Pro, you can follow the instructions listed below.

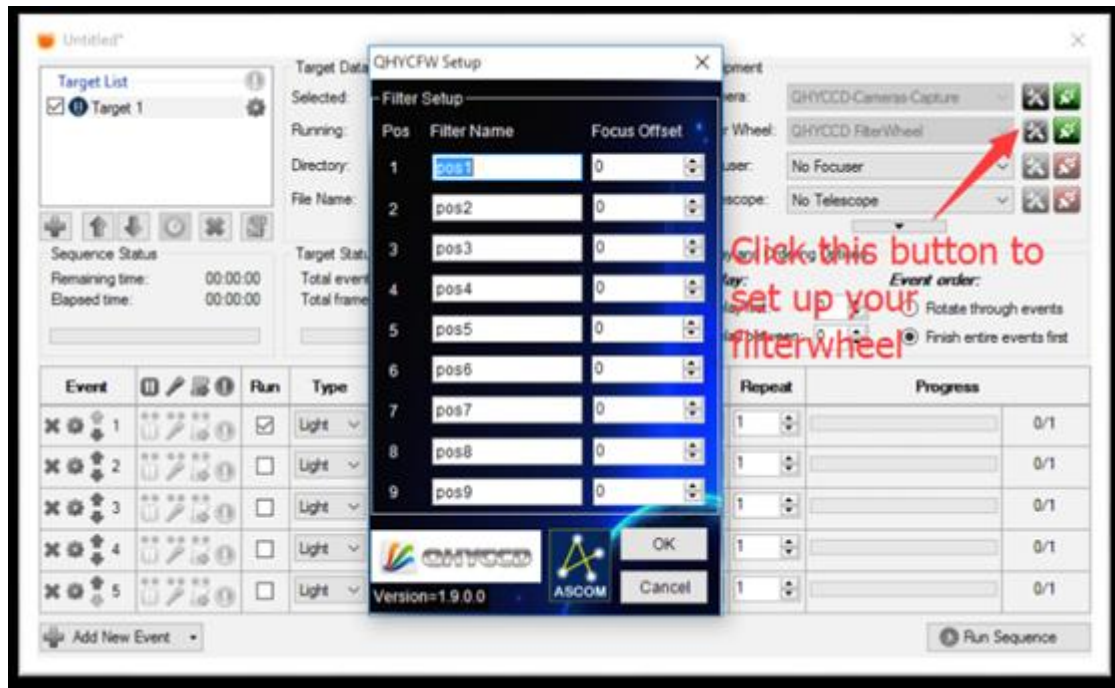
Open sequencer by clicking the button in the red rectangle as shown in the picture below.



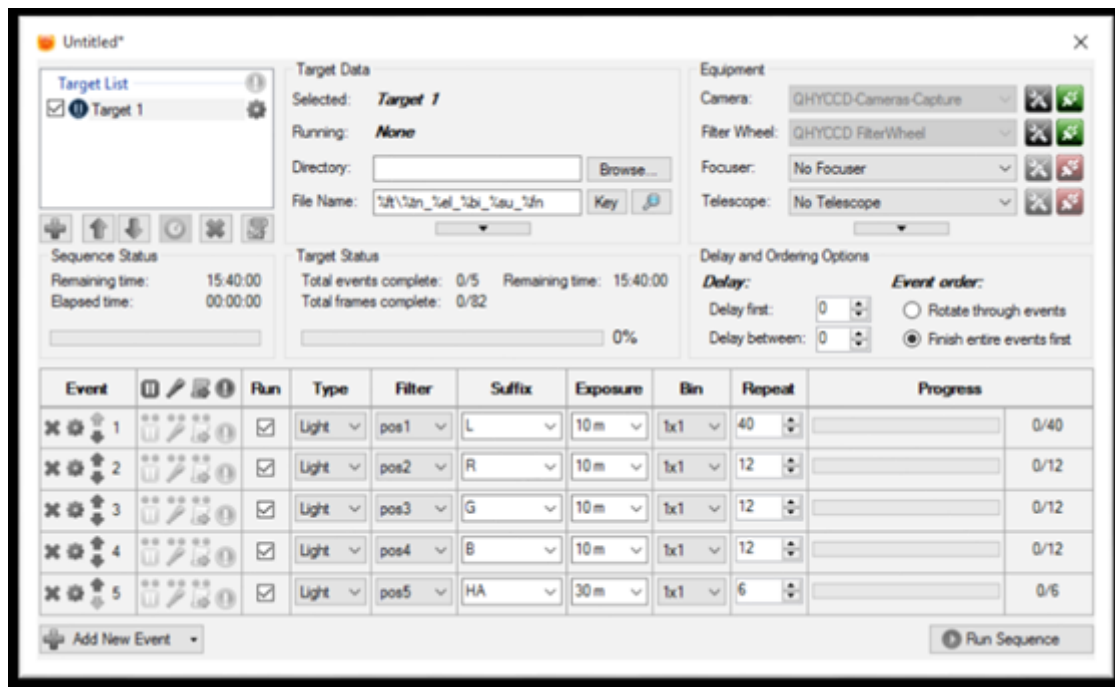
If you've connected QHY16803A to your PC before click that red button. The red button will turn to green as shown in the picture below.



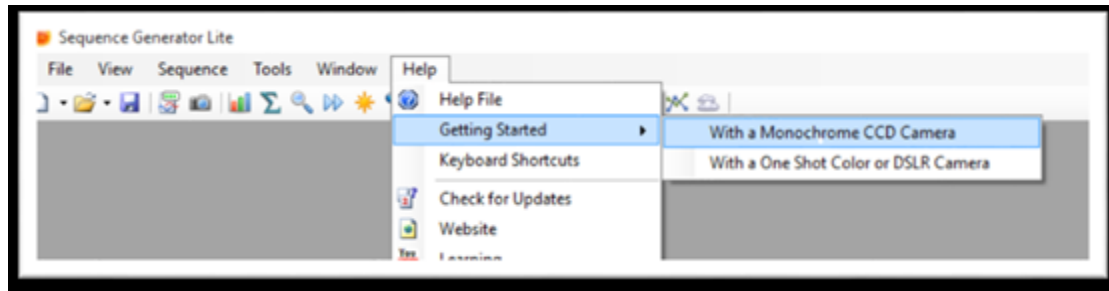
The next step is going to configure the built-in filter wheel. Before you select QHYCCD Filter wheel as the filter and click the red connect button, you should also make sure you've downloaded and installed the [ASCOM Filters Plug](#) for the built-in filter wheel, you've plugged in the 12V power supply cable, and the initialization of filter wheel has been finished.



For example, you can change the filter names to Lum, Red, Green, Blue, and Ha as you installed them this way. Then you make schedule events to take turns to use these filters as shown in the following picture.



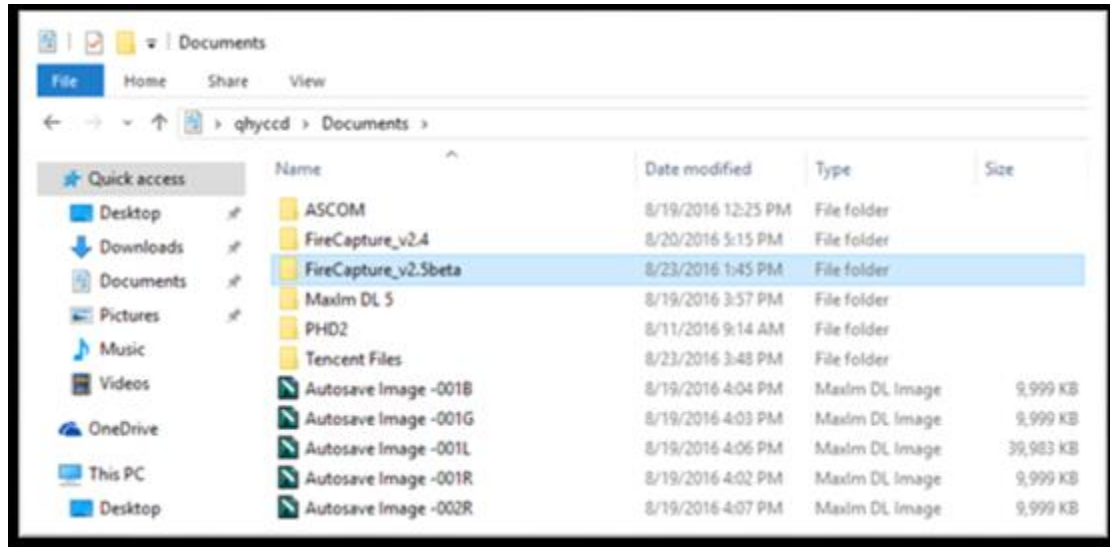
For detailed and helpful tutorial of this software, please go to its website to check its help content.



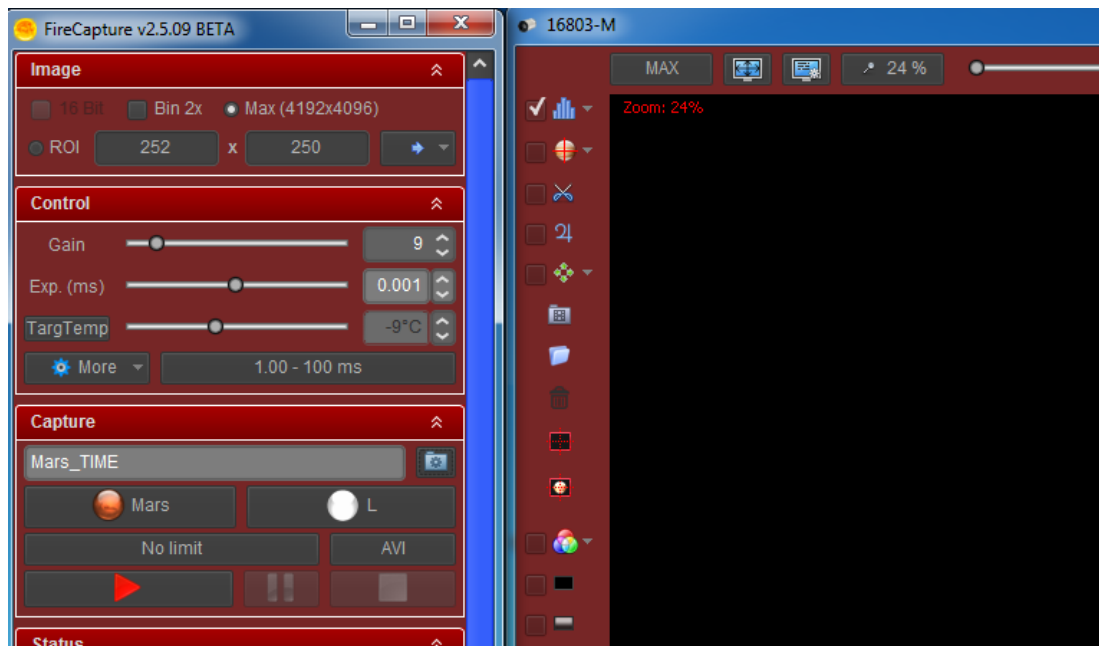
05 Use QHY16803A in FireCapture

The latest FireCapture supports QHY16803A already. Please go to FireCapture website to download its [v2.5 BETA \(32-bit\) version](#).

By default, it will be installed in the "Documents" folder. After it was installed successfully, navigate to "Document folder", and you will find its installation folder as shown below.

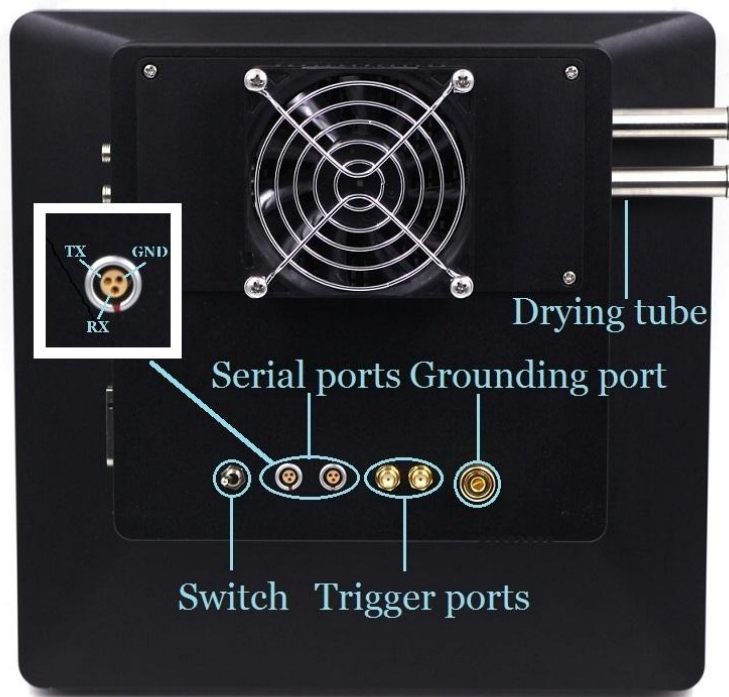


Enter that folder and run "FireCapture.exe", then select QHYCCD camera. And after the loading, you will see the image on FireCapture like shown below.



For detailed and helpful tutorial of this software, please go to its website to check the tutorial section at <http://www.firecapture.de/>

06 Peripheral Ports on QHY16803A



Serial ports

QHY16803A provides two serial ports, which are connected to the built-in USB hub through FTDI USB to Serial chip. These two serial ports provide standard RS232 signal level($\pm 10V$). You can use it to connect your camera to electric focuser and even equatorial mount. But note that this signal level is different from TTL signal level used in EQMOD. If you want to connect your camera to equatorial mount through EQMOD, A signal level convertor between TTL and RS232 is needed.

After you finished installing the drivers, the serial ports drivers should also be installed. You can check its COM number in the device manager in the Windows so that you can use it in your application software.

Serial port cable is optional accessory, and QHYCCD is developing many types of serial port cable. You can contact QHYCCD to know if there's serial port cable you need.

The pin arrangement is already shown in the picture above.

Trigger ports

There are a trigger-in port (left) and trigger-out port (right). Trigger-in port is a pulse input port. The camera does not start exposure until it receives a pulse from its trigger-in port. Trigger-out

port output a indicative signal during the exposure cycle. These two ports use optocoupler. If you want to use these two ports, you can consult QHYCCD for detail method for electric connection.

Grounding port

Keep the camera in good contact with the earth is the premise that the entire shooting system can work safely and properly. So QHY16803A provides a grounding port. This port is connected to the GND on the PCB in the camera, and the GND is also the cathode of the 12V power supply. The grounding wire is included in the package, you can use it to connect the camera to other equipment (Metal case of the equatorial mount or metal case of PC) so that they have common ground. If you have no experience about it, please consult professional electrician.



Caution: Never connect the grounding port to any electrical socket or outlet, otherwise, electrical shock may happen.



12V power ports

These two ports are connected in parallel, so you can either use one of these two as power input port and use the other one as a power output port for other devices that need 12V power supply.

USB type-A ports

These two ports are USB expansion ports connected to the built-in USB hub, you can use it to connect with guide camera or other USB devices. This two ports can output 500 mA current. To reduce the power load of the internal circuit, it's recommended to reduce the use of current.

QHY A series Cameras have a USB hub board in them. And these two USB type-A ports along with these two serial ports aforementioned are all branched out by the USB hub board. However, in some particular condition, it results in conflict and the camera will stop working. For example, in the condition where there equatorial mount you are using also has a built-in hub or where you used a USB hub already. In this case, you need to install the USB Hub bypass board (small red-colored board) included in the package.

For detailed instruction of how to install the USB hub bypass board, please check the content in the following link.



[http://note.youdao.com/share/?token=D1C38D9FEEDD41D2A8C7D33F9EB74294&gid=7234866](http://note.youdao.com/share/?token=D1C38D9FEEDD41D2A8C7D33F9EB74294&gid=7234866#/)
[#/](#)

After you've installed that, those two USB type-A ports and those two serial ports become invalid.

Note that the camera used in instructions are not QHY16803A, but they have similar structure. Follow the instruction carefully.

USB type-B port

This port is used to connect the camera to the computer.

7 FAQ

1. What's the back focus length of QHY16803A ?

The back focus length of QHY16803A is between 44mm to 45mm, and if it is used with QHYOAG-M and M54 adapter, the back focus length will be between 57.5mm 58.5mm. For more information, please see the tenth part of this manual.

2. How to clean the CCD sensor and the optic windows of the camera?

Usually you can use flat fielding calibration to eliminate the shadow resulted from dust. It's not recommended to open the CCD chamber to clean the CCD on your own. Because if you do it in a place where there are still lots of dust, your effort may backfire. Besides, during the process of cleaning, you may scratch the CCD, and you may damage the internal circuit when you open the camera.

QHYCCD provides CCD clean service. The cleaning fee is 100 USD per time and it doesn't include the shipping cost.

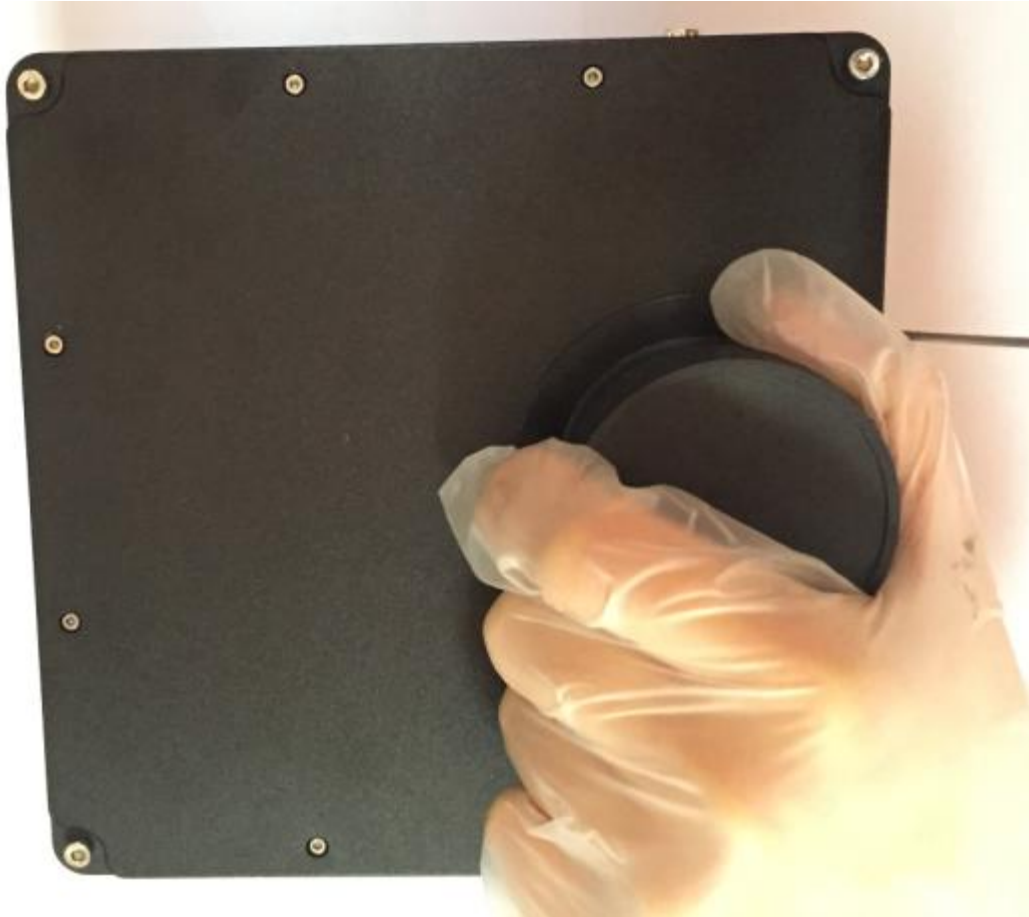
If you really want to clean it on your own, you can follow the instructions below.

Note that the camera used in instructions are not QHY16803A, but they have similar structure. Follow the instruction carefully.

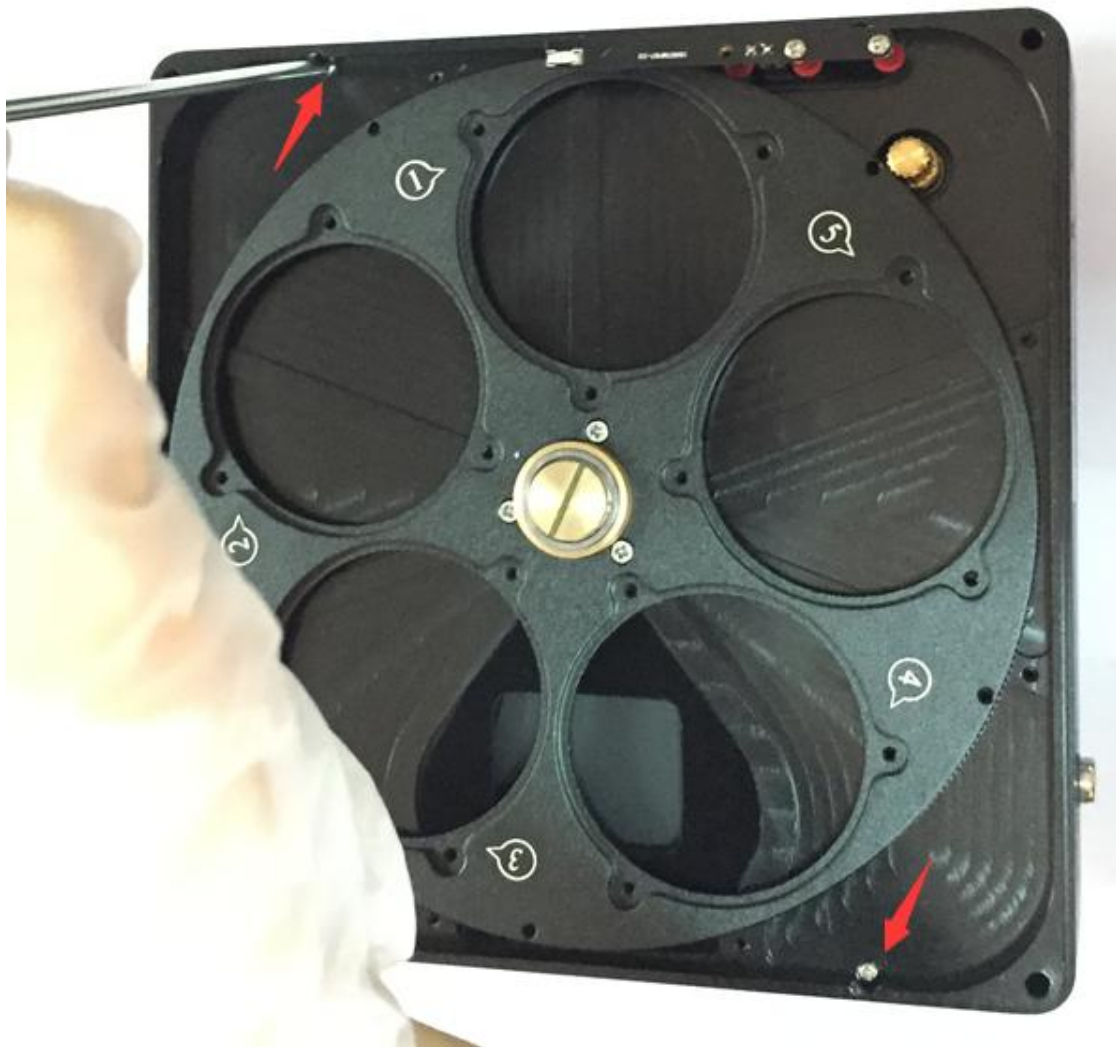
You need to prepare the tools by yourself to open the camera.



Remove all the screws on front of the camera case and remove the front case



You will see two screws to fix the filter wheel case (the middle layer of the camera). Unscrew them.



You will see the power PCB board. Remove the two screw of the power PCB board

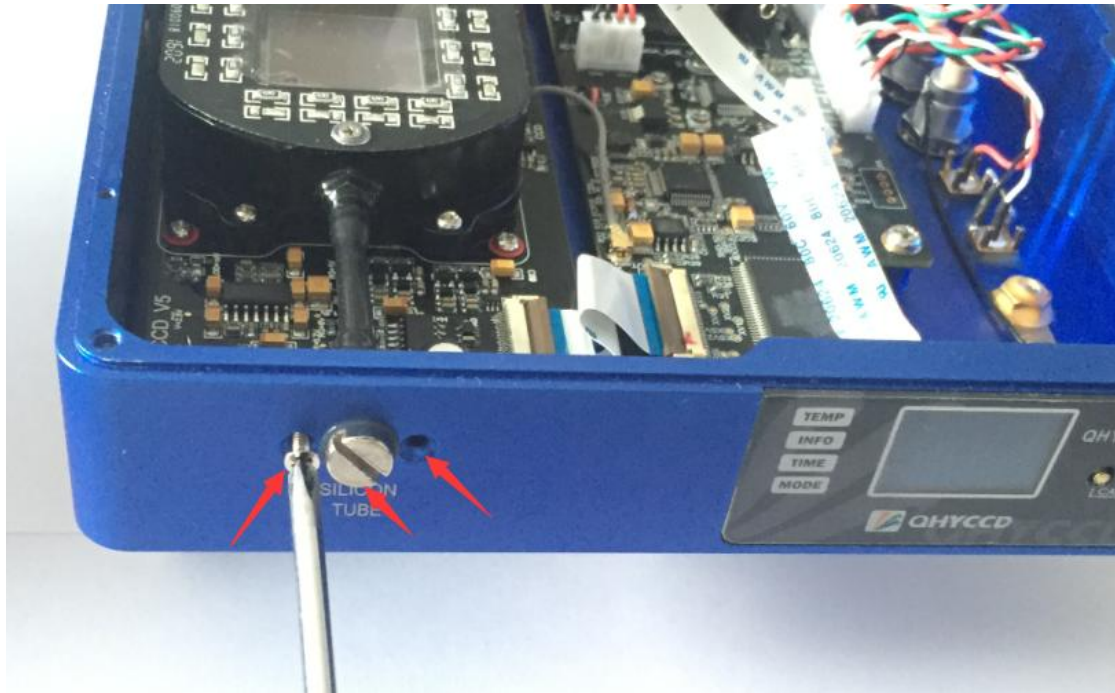


Remove the three cable carefully.

Please use a film to protect the CCD chamber optic window.



The CCD chamber is connecting with the silicone gel tube socket by a rubber pipe. Remove the two screw for the silicone gel socket.



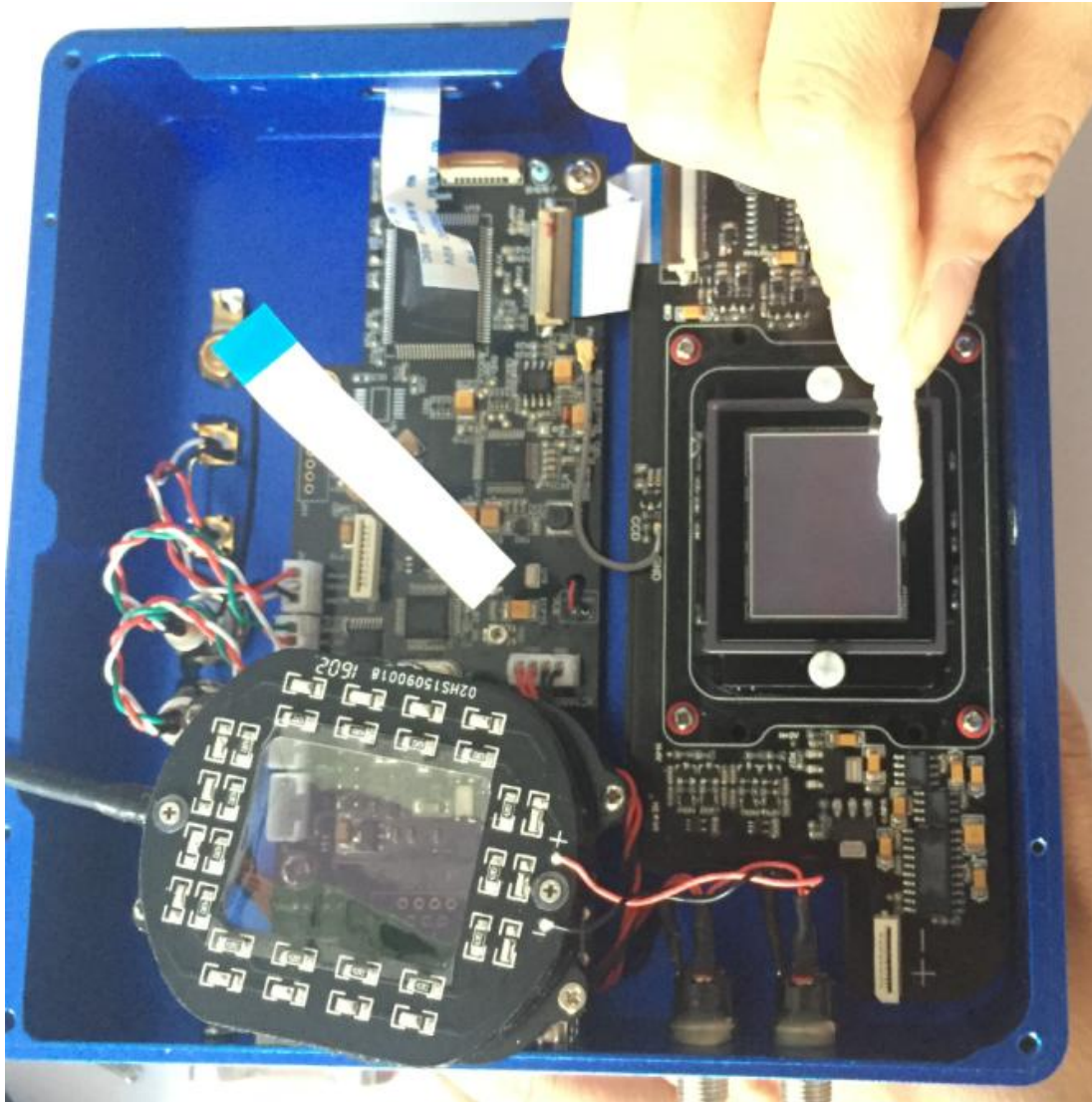
Remove the four screw for the CCD chamber. There is totally eight screws for the CCD chamber. Only remove the four screws pointed by the red arrows in this picture.



Now the CCD chamber is removed. The CCD sensor can be clean here.



The CCD sensor has the AR coating. Please clean it carefully by using the lens paper or another professional tools (like the DSLR sensor clean tools)



3. How to protect the cooler in QHY16803A?

The cooler in QHY16803A can lower the CCD temperature to a value that's almost 40 degrees centigrade below the ambient temperature. So you need to be careful to avoid thermal shock, which refers to when the cooler's temperature rises or falls dramatically, the cooler is subjected to strong internal stress due to contraction principle. Drastic thermal shock can shorten cooler's service life or permanently break it.

So when you begin to adjust the CCD temperature, you should avoid setting "Cooler Power" to its maximum value, and you should gradually turn up the "Cooler Power" value. When you turn off the power, if the "Cooler Power" value is very big, you should gradually turn it down before turn off the power.

4. What's small display on the camera for?

The OLED display is used for display certain formation related to the shooting. It is directly driven by application program. So it may display different information or doesn't display anything at all based on different application programs. Currently all

application program don't support this display, please wait for latest application program that supports this display.

8 Camera Maintenance

Drying the CCD Chamber

The CCD sensor is located in a CCD chamber. This chamber is airproof and connect to the socket of the silicone gel tube (drying tube) on one side of the case. If there is moisture and it causes the CCD sensor glass to get dew. You can use the silicone gel tube (drying tube) included in the package to dry it.

Please put the effective silicone gel into the silicone gel tube. Make sure to put a small amount of cotton inside to prevent the silicone gel get into the CCD chamber.

The process of drying usually needs 24 hours.

Avoid CCD chamber optic window get dew

If the environment humidity is very high, the optic window of the CCD chamber may get dew. The QHY16803A has the build-in heat board on this optic window to heat the optic window to avoid it. In most conditions it can take effect.

If the optic window still get dew please try the following method.

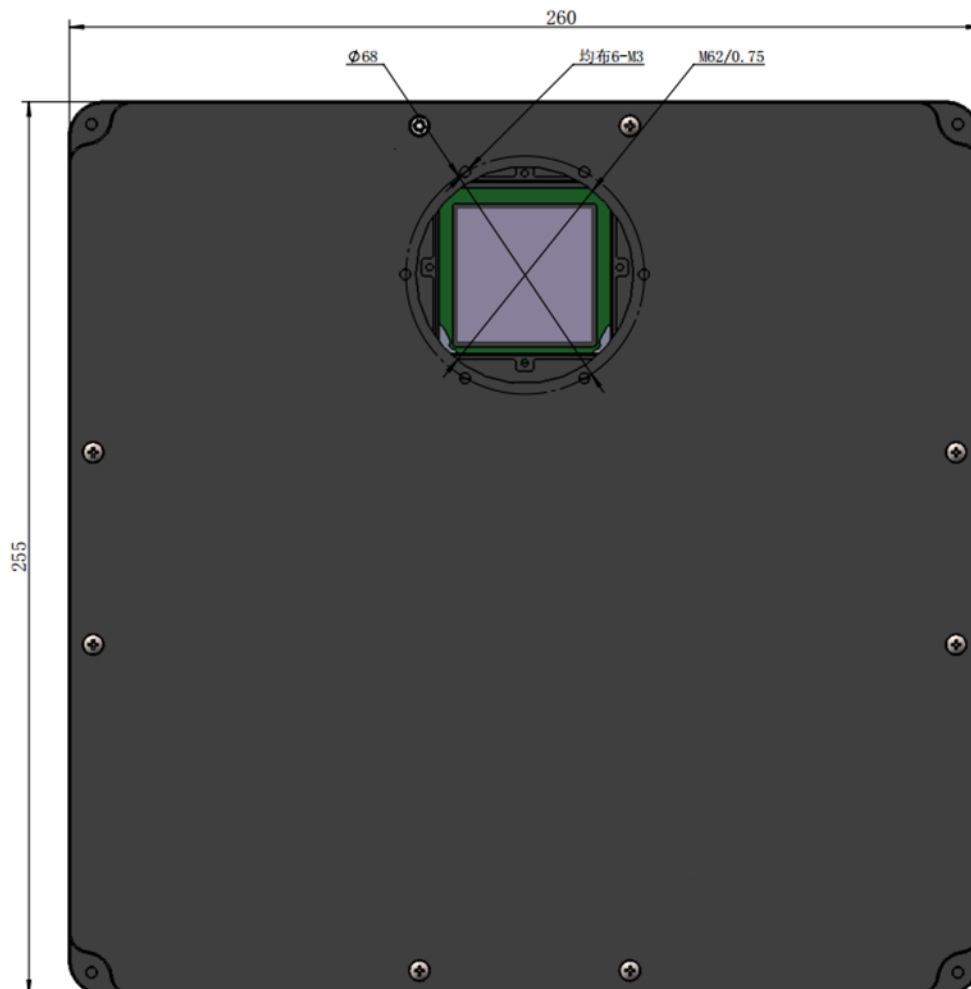
1. Avoid the CCD Camera face down to ground. The cold air is heavy than warm air, if you put the camera facing down to the ground, the cold air is easy to get the optic window and cause it very cold and get dew
2. Increase the temperature of the CCD sensor. You can increase the CCD sensor temperature a little to prevent the optic window get dew.
3. Check if the heat board working. If the heat board not working, the optic window is easy to get dew. Normally the heat board can get about 65-70C in +25C environment. If it is not so warm, it maybe the problem of the heat board damaged. Need to contact QHYCCD to replace one heat board.

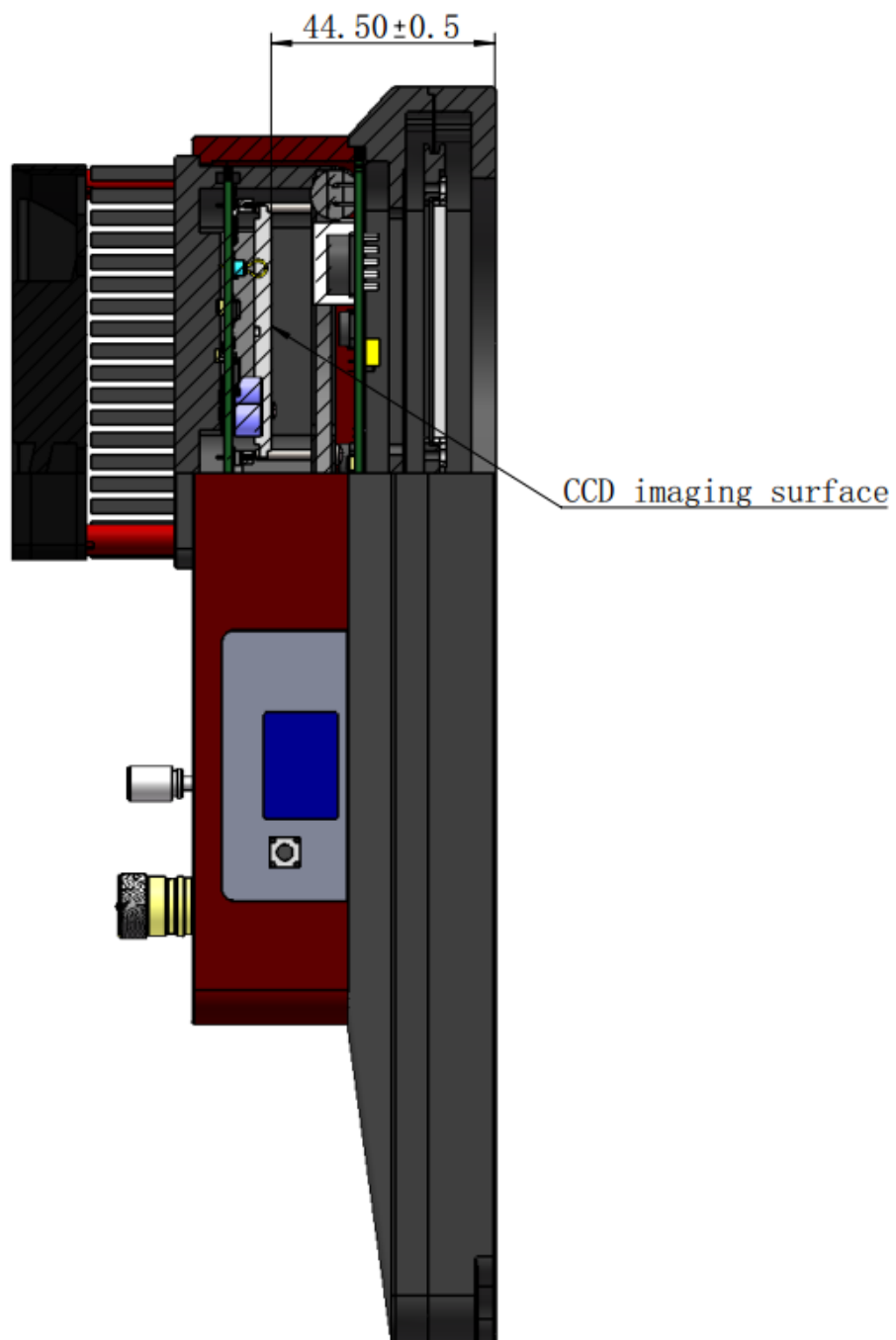
9 Specifications

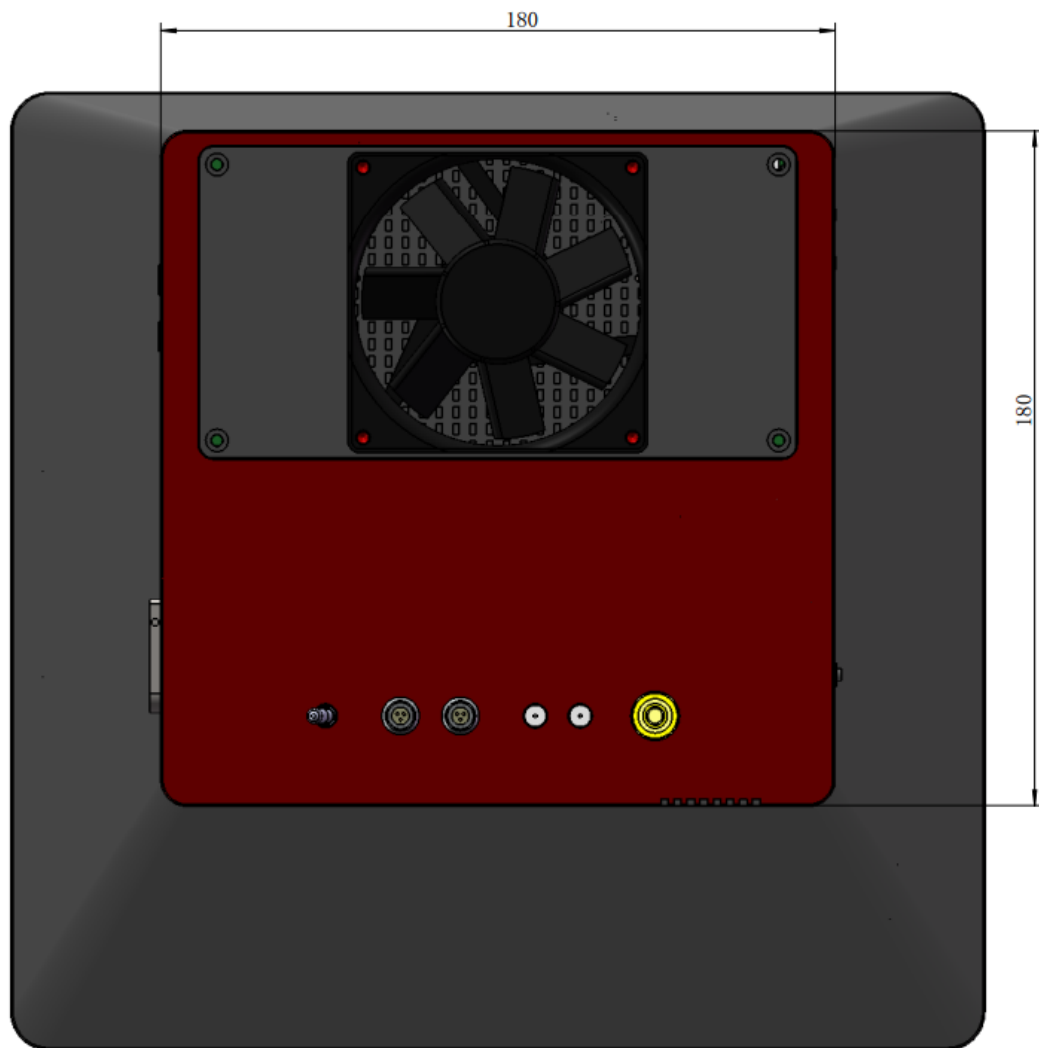
CCD Sensor	KAF16803 Standard Grade (Mono)
Effective Pixels	16mega pixels
Pixel Size	9um*9um
FullWell	100Ke-
Imager Size	36.8mm x 36.8mm
ADC	16bit
Readout Noise	Typical 10-13 e
Binning	1x1,2x2,4x4
TEC	2 stage
Cooling	Typical -40 below Ambient
Shutter	Butterfly Mechanical Shutter with Uniform illumination
CCD window heater	Yes
Fully Airproof CCD chamber	Yes. With silicone gel tube socket

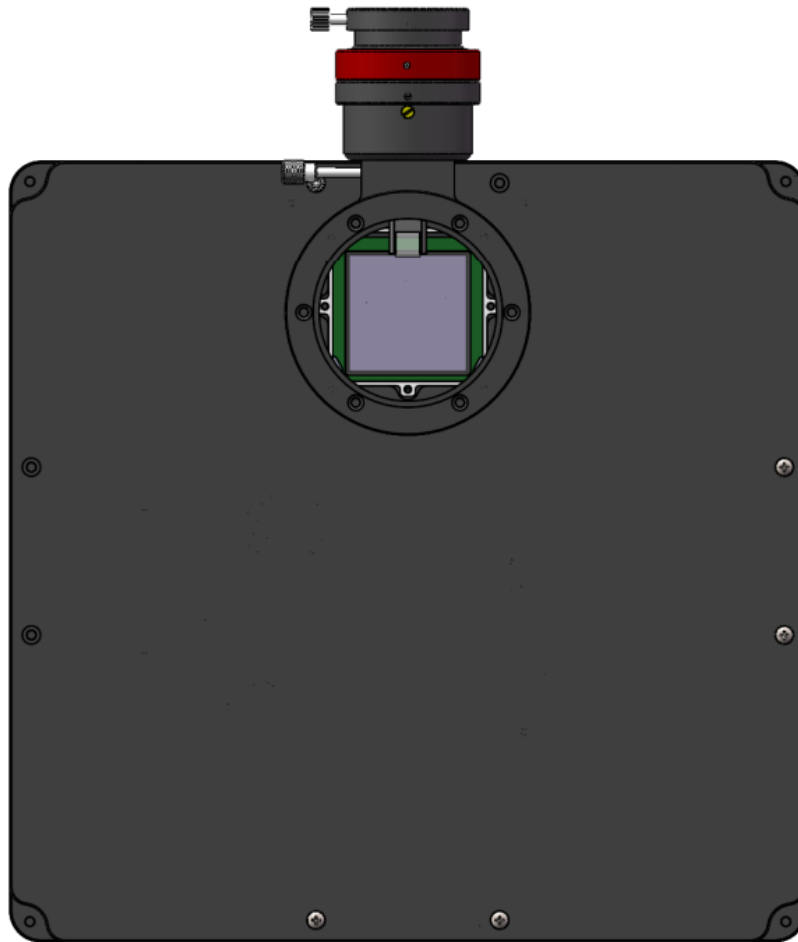
10 Mechanical Dimensions

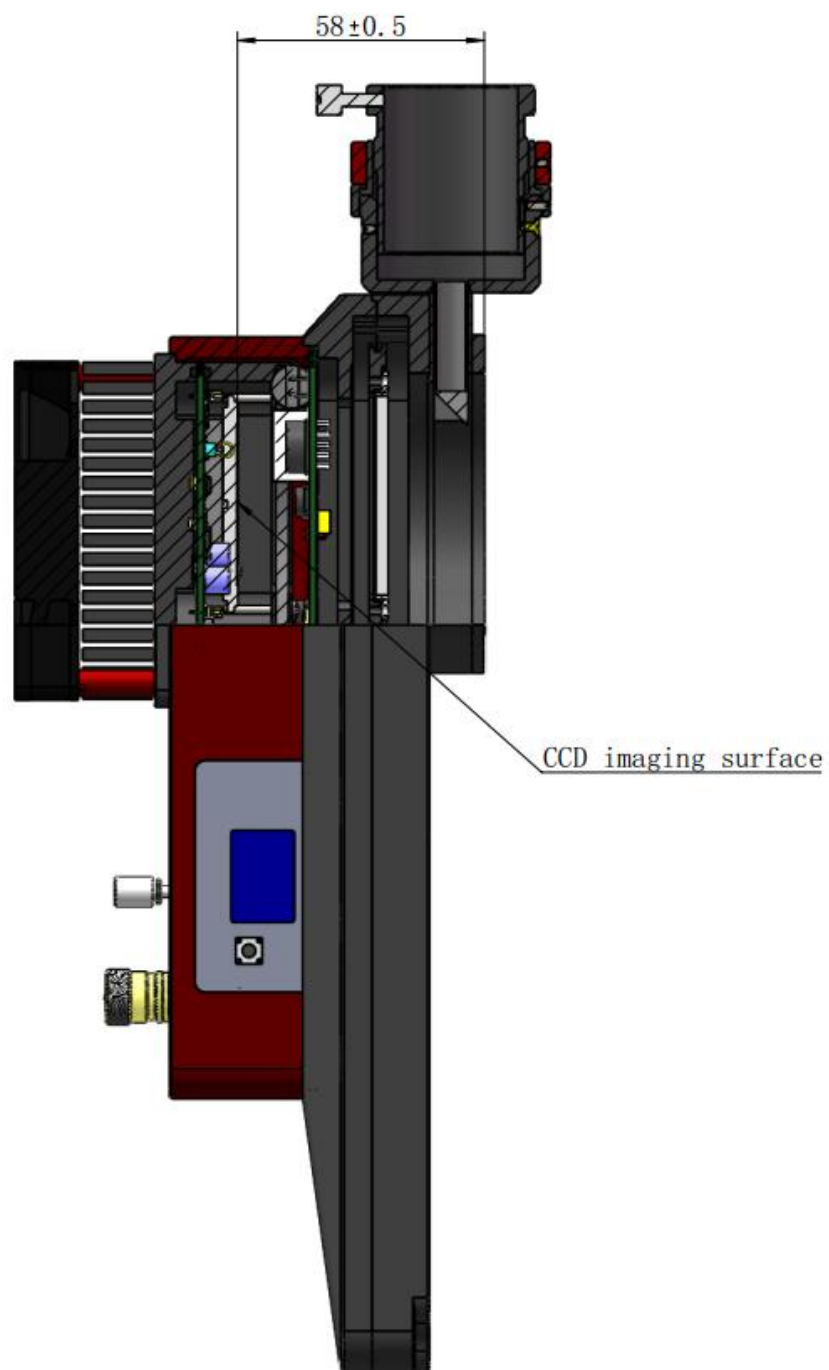
1. QHY16803A without OAG

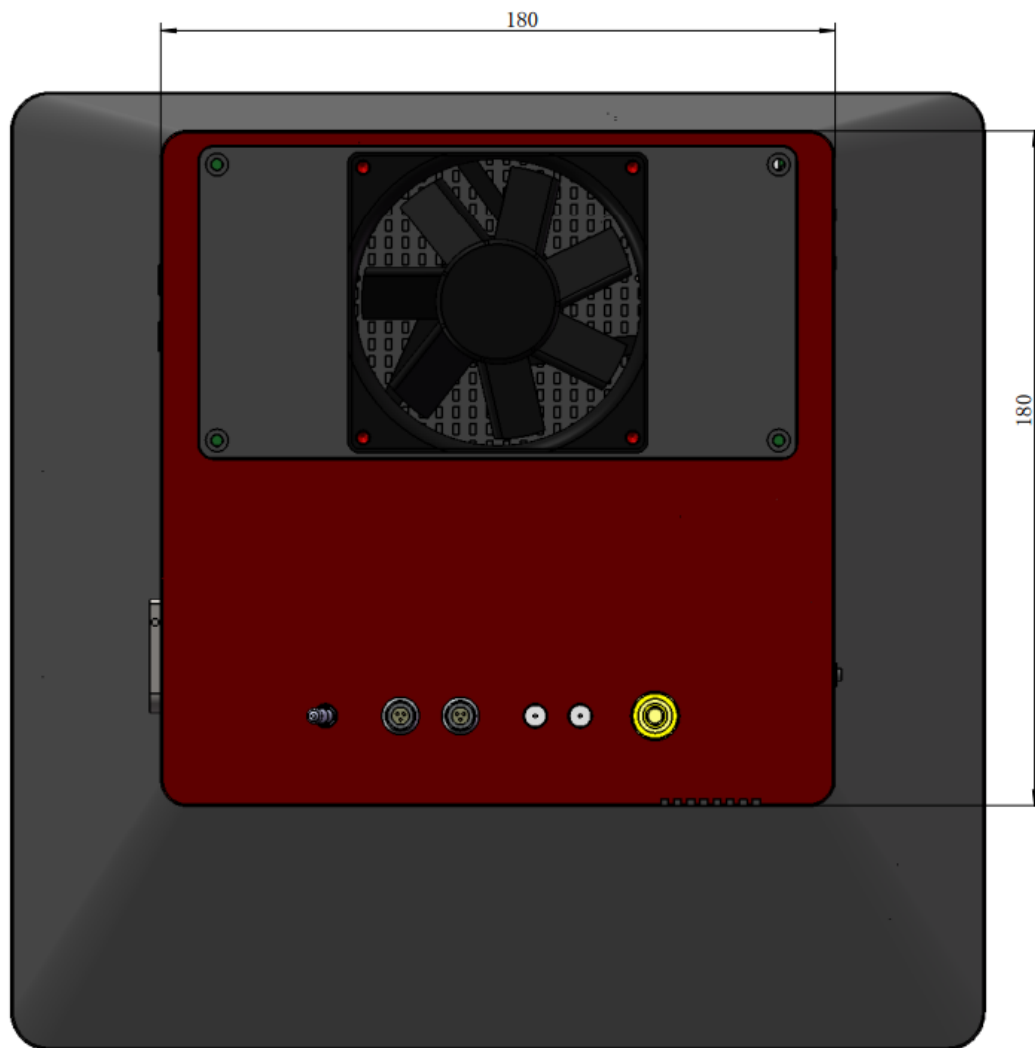






2. QHY16803A with OAG





11 Revision history

Date of change	Revision	Content of change
November 29 th , 2016	1.0	First edition
January 12, 2017	1.1	Added information about the back focus length