



**QHYCCD**

All-in-one COLDMOS Astronomy Camera

# QHY695A

## User's Manual Rev. 1.0



This document is an online document. You may save this PDF file or print it out.  
QHYCCD reserves the right to change this user manual without prior notice.

# Package Contents

Please confirm that the package contains the following items:

Item	Quantity
12V power cable	1
12V car power adapter	1
USB cable	1
Grounding cable	1
M42 to 2 inch adapter ring	1
Drying tube	1
Desiccant	1
USB hub bypass board	1
Screw driver for M2 hexagon screw	1
Screw driver for M3 hexagon screw	1
Screws for fixing filter frame and filter	many
Inspection report	1
Waterproof plastic box	1
OHYOAG-S	1
Camera	1

## Optional accessories

Item	Quantity
12V power adaptor (12V 6A)	1
Trigger cable	1
RS232 cable (1.5m)	1
Screws set used to fasten filters	many

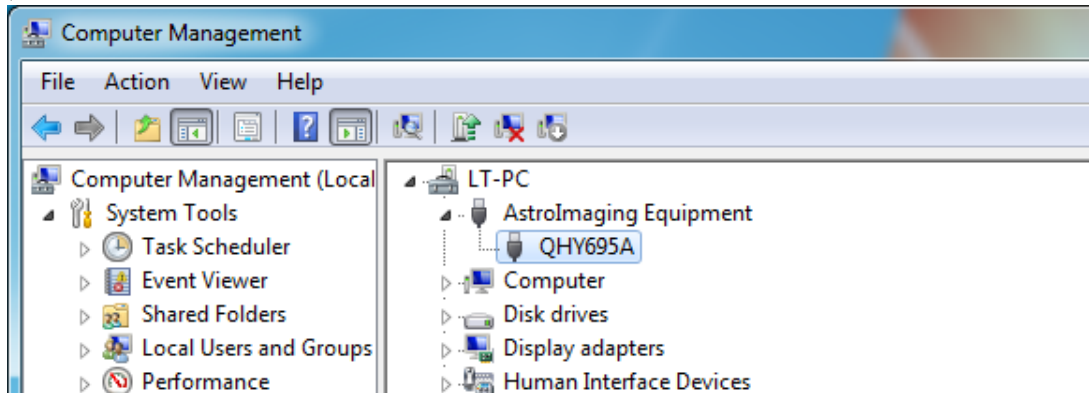
**Note that if the user wants to buy 12V power adapter by themselves, its output current is at least 3.5A, and the polarity must be center positive.**

# Table of Contents

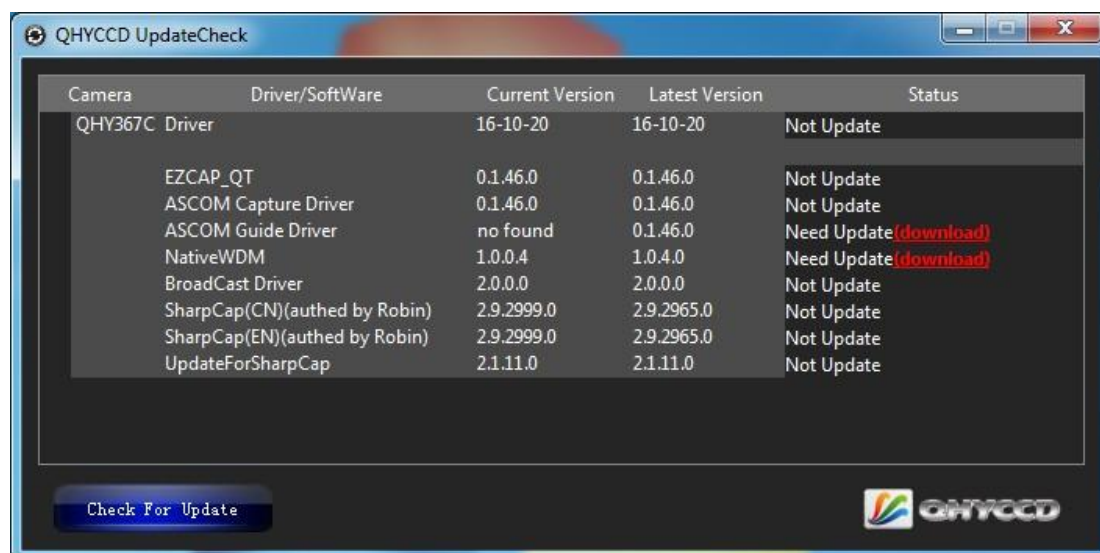
- 01 Software Installation
- 02 Filter installation
- 03 Use QHY695A in EZCAP\_QT
- 04 Use QHY695A on ASCOM platform
- 05 Use QHY695A in FireCapture
- 06 Peripheral Ports on QHY695A
- 07 FAQ
- 08 Camera Maintenance
- 09 Specifications
- 10 Mechanical Dimensions
- 11 Revision History

# 01 Software Installation

1. Download and install [ASCOM platform](#)
2. Download and install the [QHY695A Driver](#)  
Note that when you run its driver setup program, you will be prompted to install camera driver, network card driver, and FTDI Serial port driver.
3. Download and install the [ASCOM Capture Driver](#)
4. Download and install the [ASCOM Filters Plug](#) for the built-in filter wheel.
5. QHY695A camera uses EZCAP\_QT as the default capture software. Please download and install [EZCAP\\_QT](#).
6. Connect QHY695A to your PC with USB2.0 cable. Connect your QHY695A to 12V power supply. Make sure 12V power supply is always connected when you use QHY695A. It is also highly recommended that to use the 12V extension cable because it has self-locking function. Note that there are two power ports on QHY695A, and these two ports are connected in parallel, so you can either one of these two as power input port and use the other one as a power output port for other devices that need 12V power supply. Turn the switch on. For the first time the system will find a new device and search the driver. You can keep skipping the online searching by clicking "Skip obtaining driver software from Windows Update" and the computer will find the drivers. After installation is complete successfully, you can find the device in the device manager as shown in the picture below.



7. QHYCCD has developed a software named [UpdateCheck](#) that can check if the drivers installed on your computer are the latest versions as well as update the drivers if needed. If the status of some driver is "Need Update" , you can directly download its update package in this software freeing you from the inconvenience of looking for and downloading it from our website.
8. Take QHY367C for example, you can see the drivers we need are the latest versions and don' t need to be updated as shown in the following picture.



Note that after you downloading and installing the new drivers by using this software, be sure to pull the USB cable out and then plug it in to enable the new drivers.

## 02 Filter installation

QHY695A contains a built-in 7-Hole 36mm filter wheel (or 8-Hole 1.25 inch filter wheel). Please follow the instructions below to install filters for it.

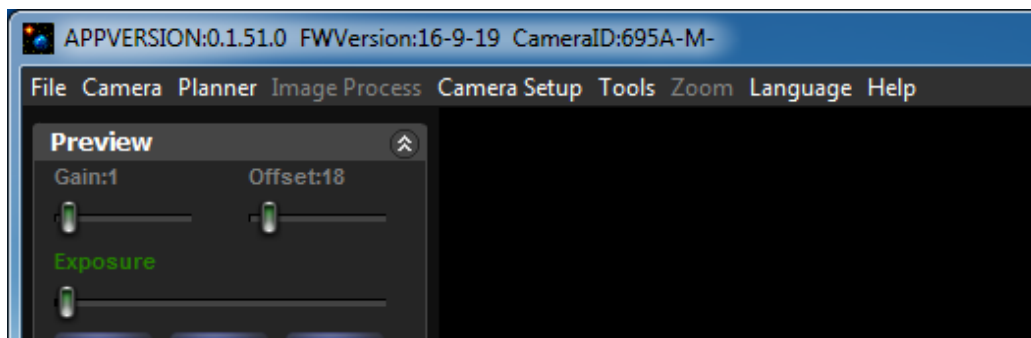
1. Use the screwdriver included in the box to remove the screws on the topside of the camera.
2. You can see the filter wheel after opening the top cap. You can install 36mm filters and fix them with screws and washers. Please make sure that filters and screws used for fixing the filters do not touch the top cap and photoelectric position detector.
3. After you've finished installing the filters, you can turn on the camera and connect the camera to your PC with USB cable to make sure the filter wheel can work properly. Note that the filter wheel use photoelectric position detector to determine the position of the filter, so make sure you are not exposing the filter wheel to strong light when you are testing if it can work properly, otherwise the strong light may affect the photoelectric position detector.
4. Install the top cap.

Now we have finished installing filters, we are going to introduce how to use QHY695A in EZCAP\_QT, MAXIMDL, and Sequence Generator Pro.

## 03 Use QHY695A in EZCAP\_QT

EZCAP\_QT is the software developed by QHYCCD. This software has the basic capture function for QHYCCD deep sky cameras. You can use this QHY695A camera with its built-in filter wheel in this software.

1. install EZCAP\_QT
2. Connect your QHY695A to 12V power supply. Connect your QHY695A to your computer with USB2.0 cable.
3. Run EZCAP\_QT. Select "Connect" in Menu->Camera. If the camera is successfully connected. The title of EZCAP\_QT will display the camera firmware version and the camera ID as shown below.

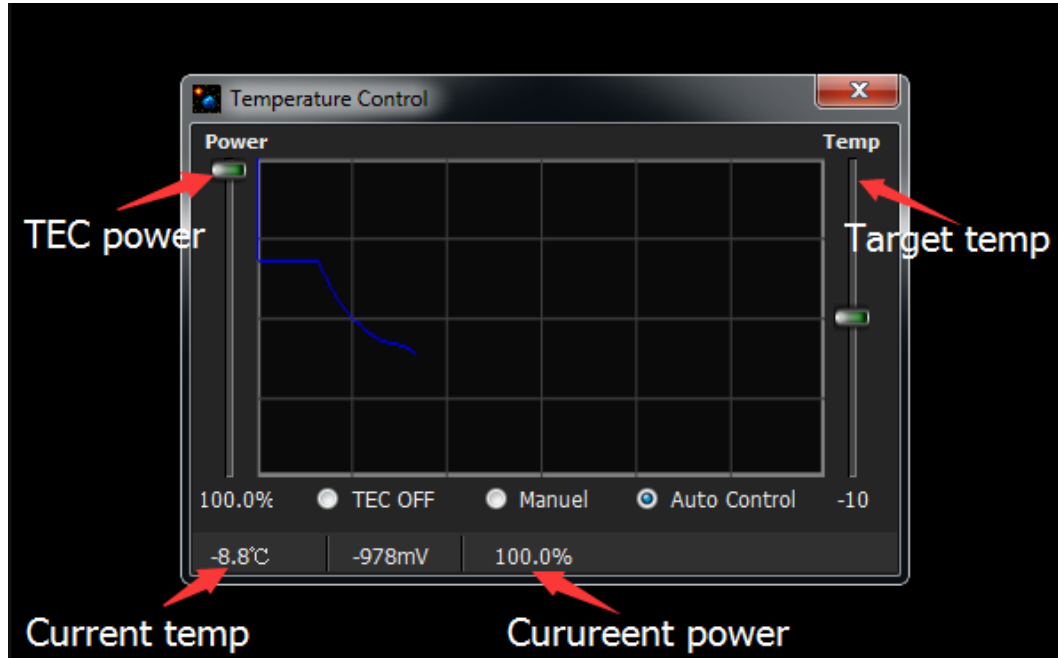


4. Before you click "connect", make sure you can see QHY695A in the device manager on Windows. Sometimes if you click "connect", you may see the warning shown in the picture below.

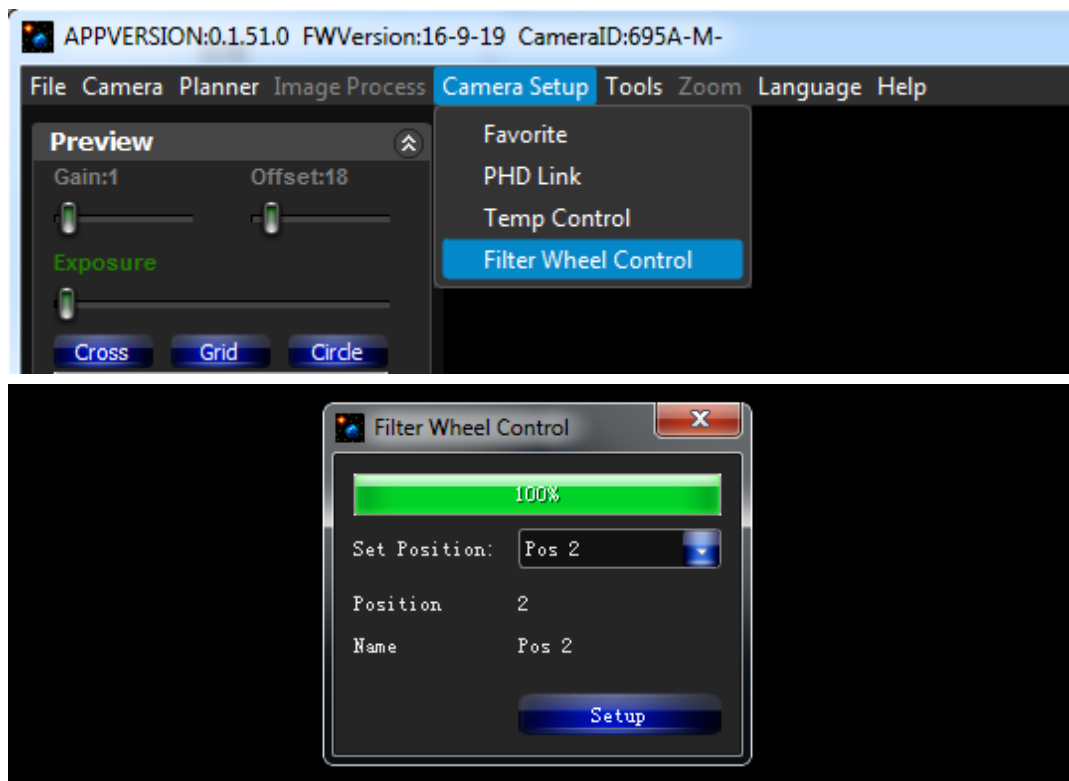


That doesn't necessarily mean that the camera and your computer are not connected. In this case, you can just wait for a minute and click 'connect' again, then you can see it will be connected successfully. This is because it usually takes a while to load its firmware into your computer.

5. In Menu->Camera Setup, Click "Temp Control" and set the CCD sensor temperature. You can enable the "Auto Control" and set the target temperature. For example here we set the temperature to -10C. The CMOS temperature will come to -10C very fast (in about 2-3minute). If you want to close the TEC, you can select "TEC OFF". If you just want to set the TEC power but not the temperature. You can select "Manual" and then set the percent of the TEC power.



6. You can select which filter you are going to use by changing the position of filter wheel as shown in the following picture.



7. You can use the preview tab to do preview. And use the focus tools to do focus. Then use the capture tab to capture image.
8. In EZCAP\_QT there is a planner for image tasking. You can capture a series images by using the table below.

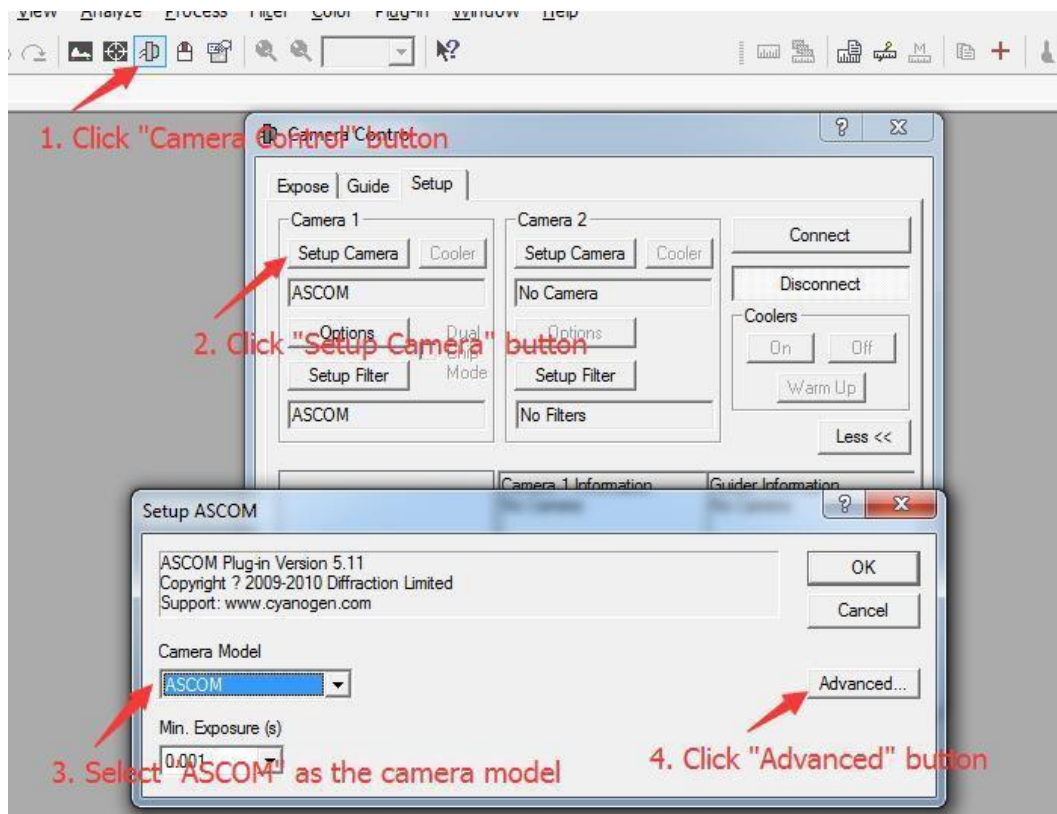


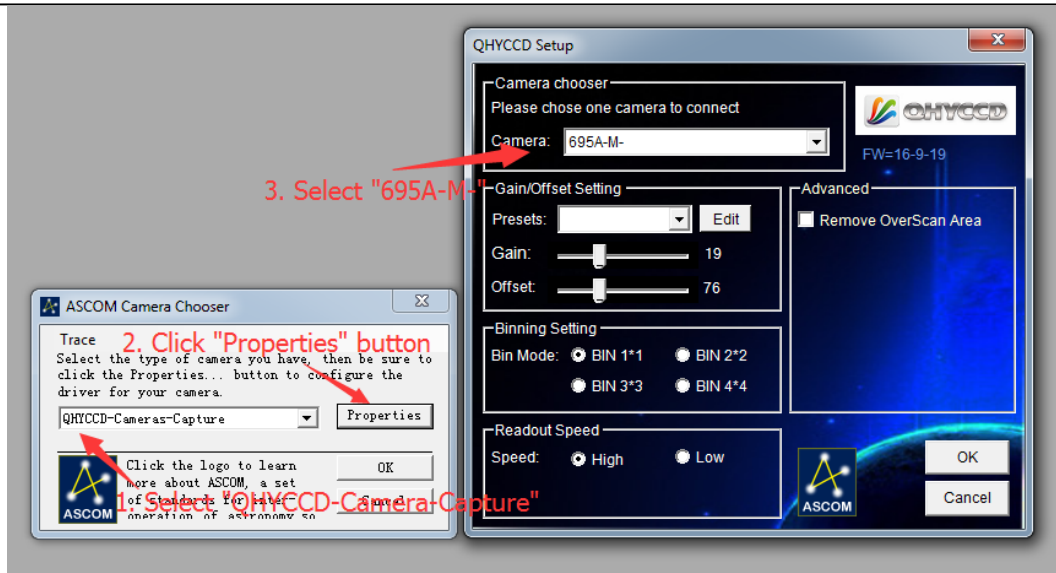
## 04 Use QHY695A on ASCOM platform

You can connect many software that support ASCOM. Currently QHY695A only supports normal ASCOM connection and does not support the ASCOM VIDEO connection. Please note that QHY695A always transfers maximum bit depth by ASCOM to make the best DSO imaging performance. The image format is 16bit width and patch zero on low bit.

### MaxIM DL

1. First you have to make sure that both ASCOM Platform and ASCOM driver have been installed. If not, please install it first.
2. Start MAXIMDL
3. Follow the instructions shown below to finish the setup

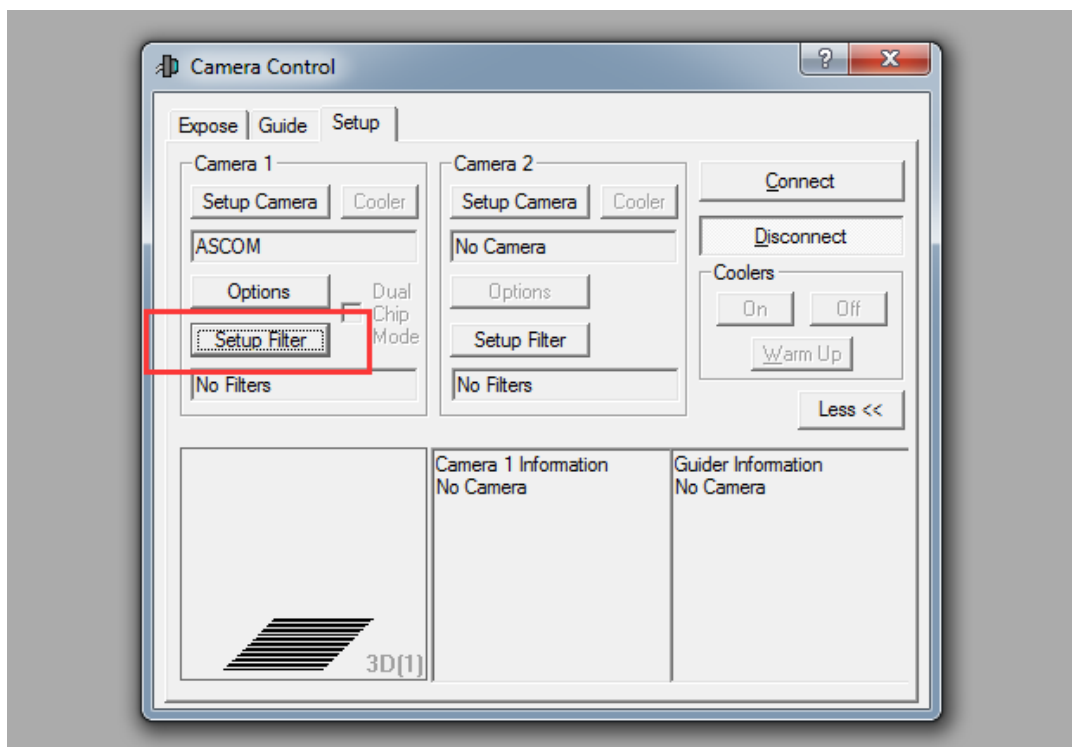


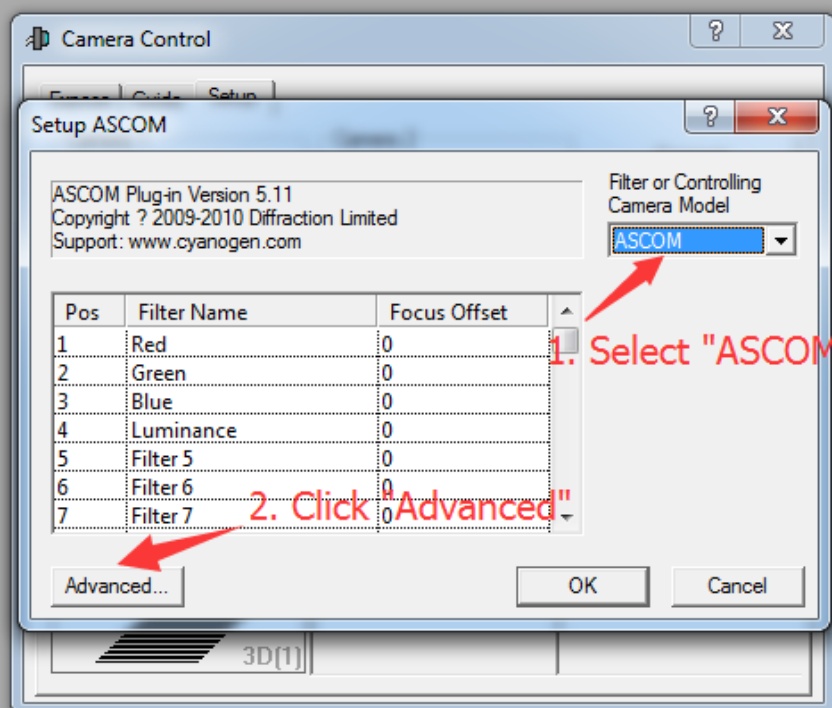
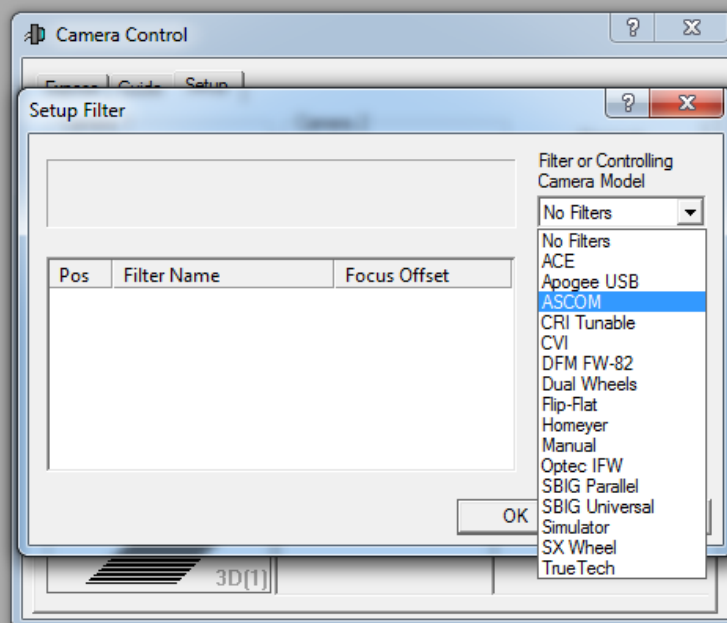


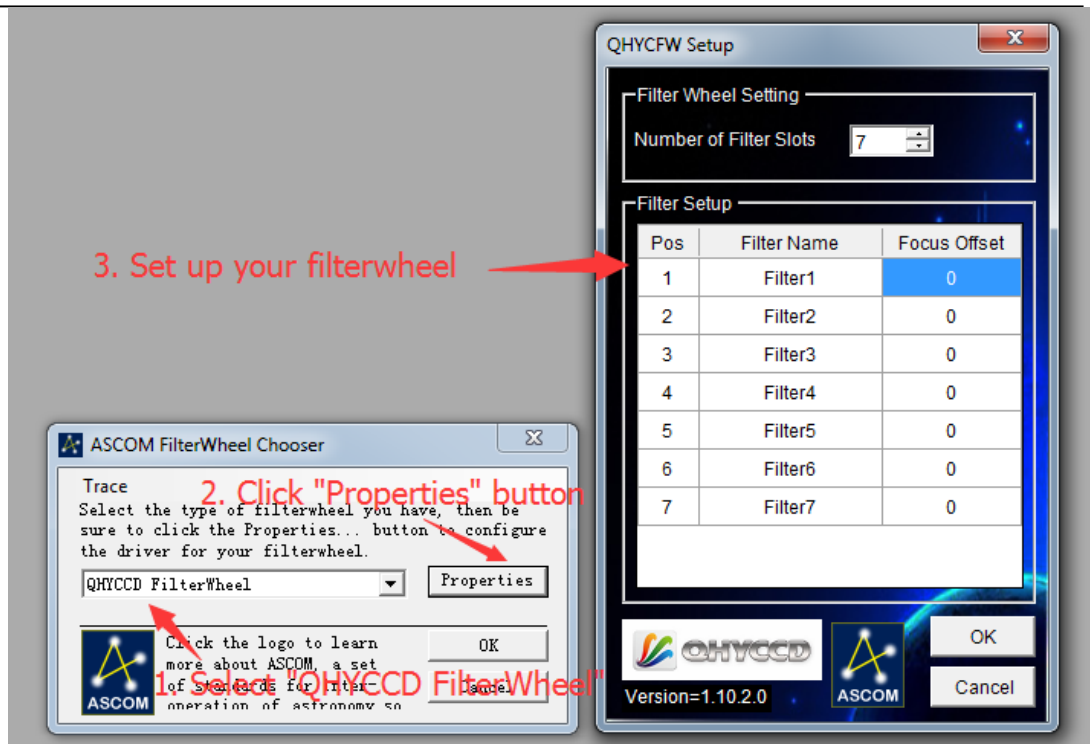
Normally, you can set the gain=15 and offset=132 to start. Keep clicking "Okay" to return to Camera Control window

4. The following instructions are going to show you how to configure the built-in filter wheel in MAXIMDL.

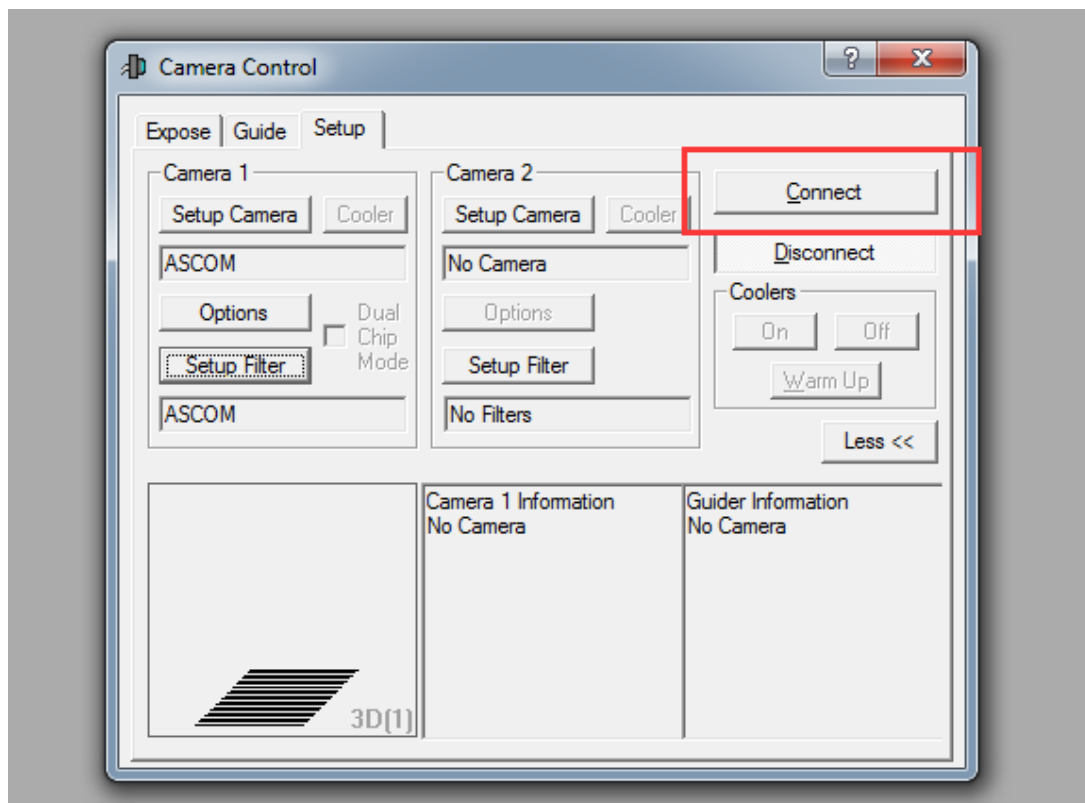
Click "Setup Filter" in the Camera Control window

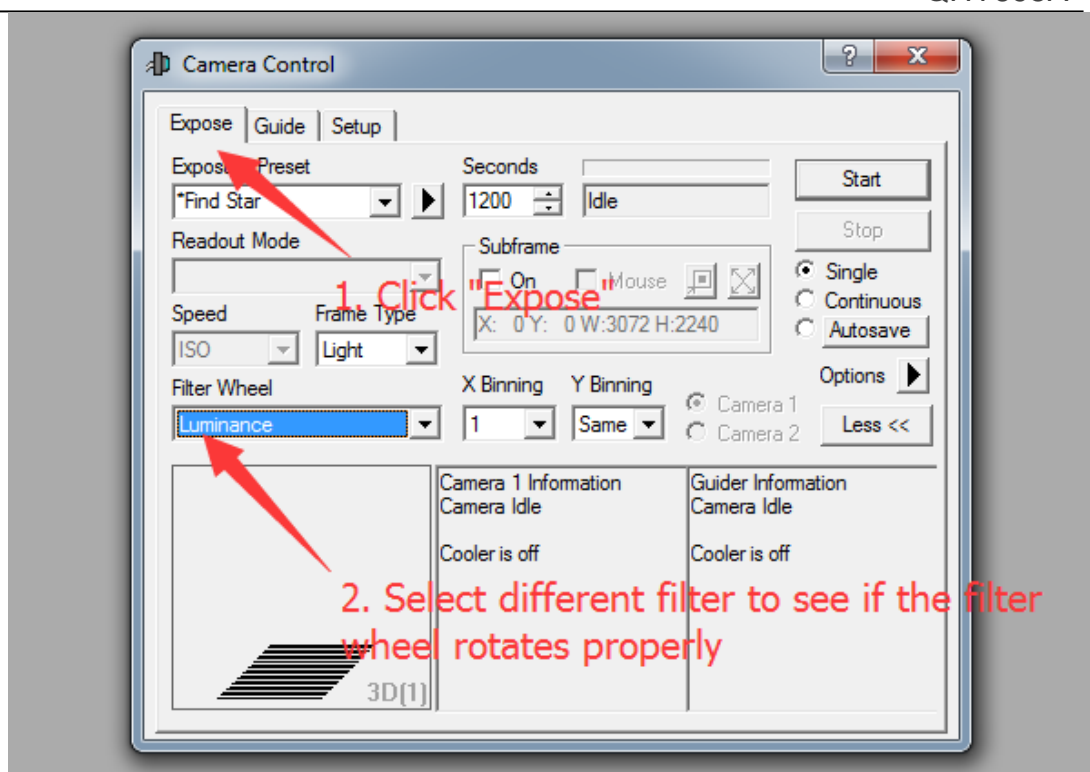






5. Keep clicking "OK" to return to the Camera Control window. Click "Connect"



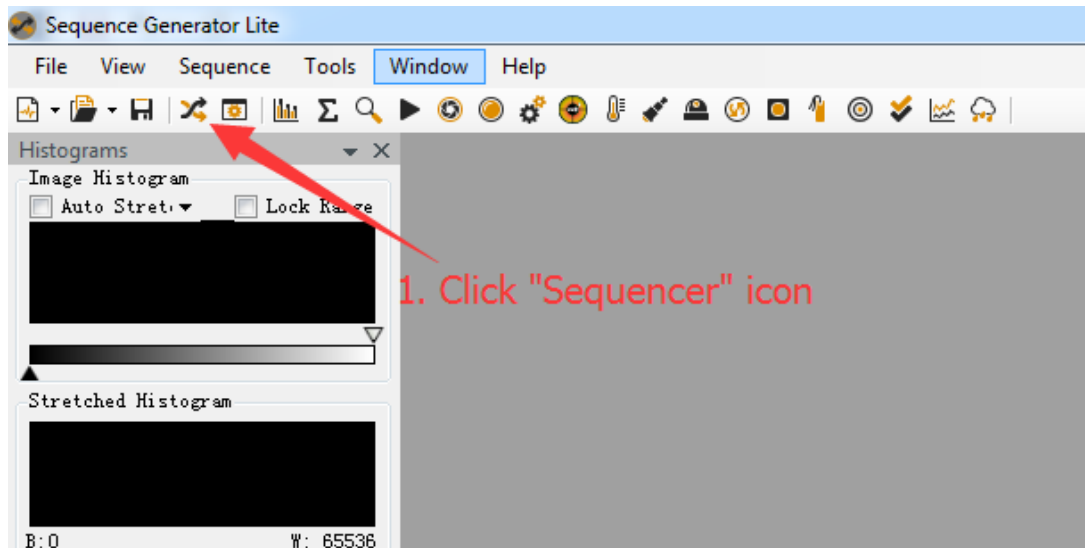


## Sequence Generator Pro

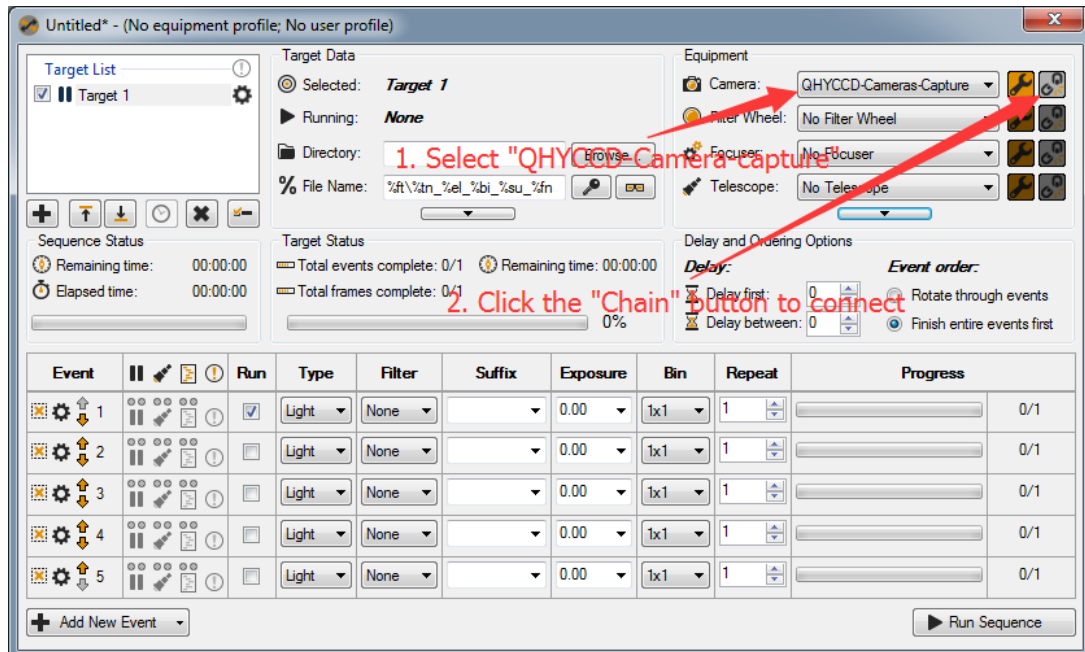
Sequence Generator Pro is an extremely powerful image capture suite. It can perform many complex tasks in order to meet your imaging needs. After you connect your gears and configure Sequence Generator Pro properly, you can go to sleep and see images in the morning.

To use QHY695A in Sequence Generator Pro, you can follow the instructions listed below.

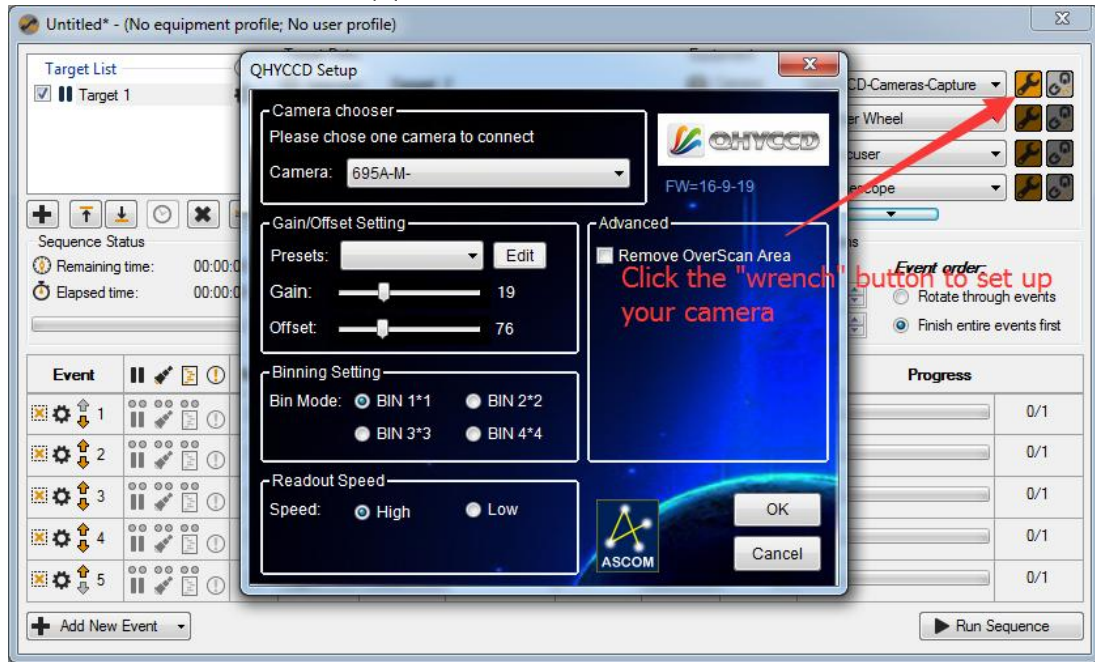
1. Open sequencer by clicking the button as shown in the picture below



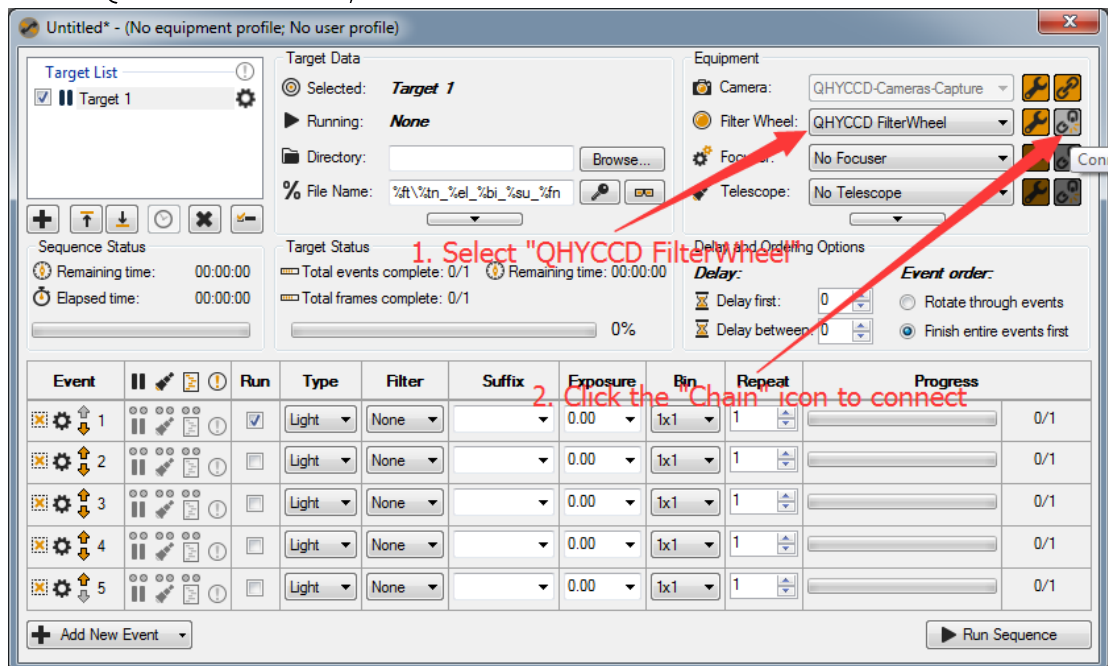
2. Select "QHYCCD-Camera-Capture", and click the "Chain" icon to connect



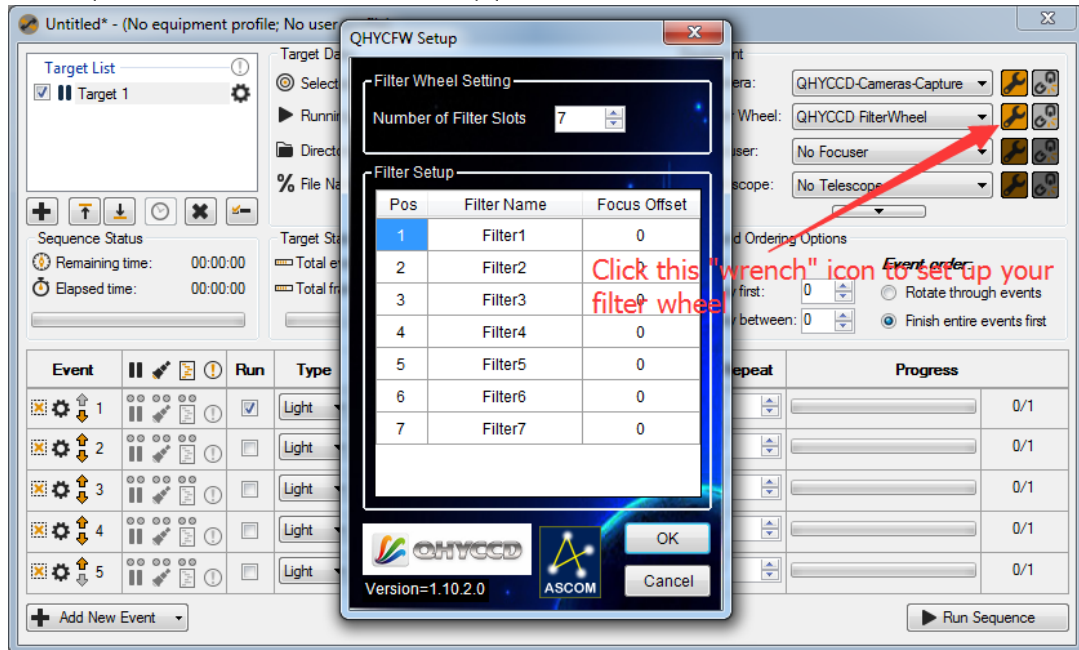
3. Click the "wrench" icon to set up your camera



4. Select "QHYCCD FilterWheel", click the "Chain" icon to connect

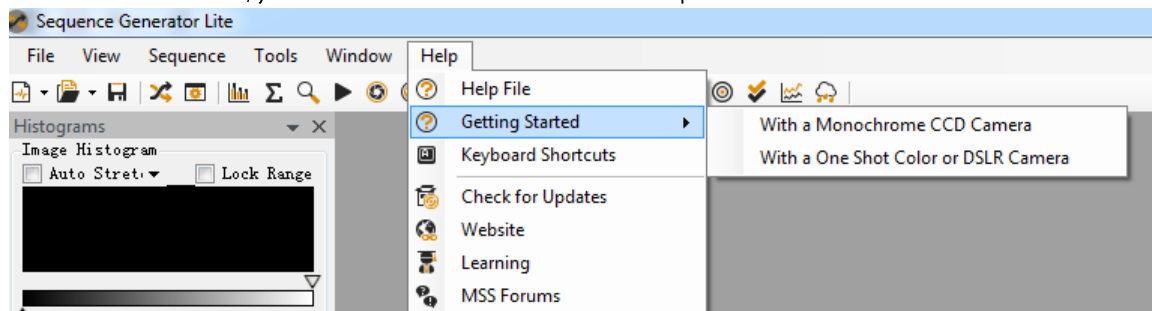


5. Similarly, click the "wrench" icon to set up your filter wheel



Note that before you select QHYCCD Filter wheel as the filter and click the red connect button, you should also make sure you've downloaded and installed the ASCOM Filters Plug for the built-in filter wheel, you've plugged in the 12V power supply cable, and the initialization of filter wheel has been finished.

For more information, you can check its tutorials on the "Help" tab

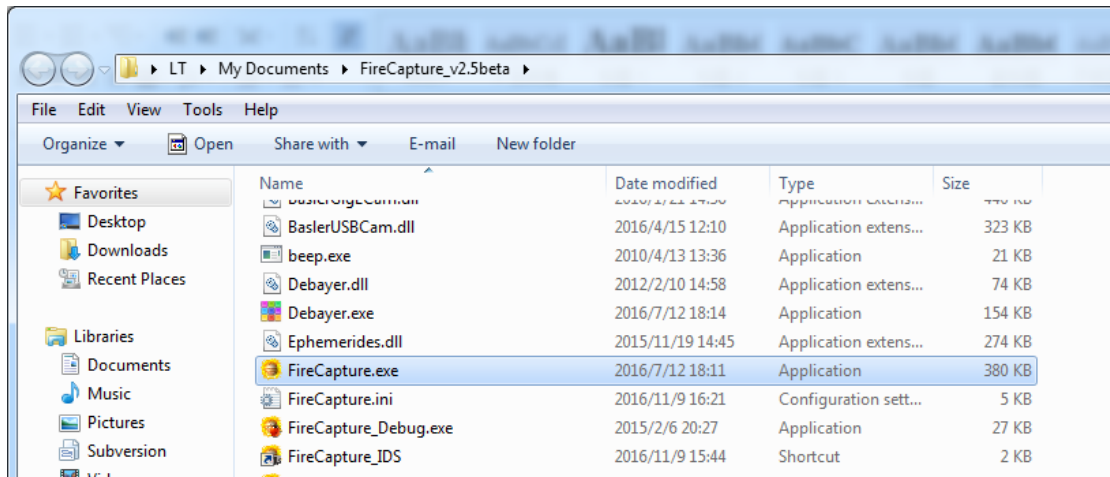


**NB:** Since Sequence Generator Pro is based on profiles philosophy of your gear to perform sequence automatically is recommend to configure a proper profile to get the best from the software. You can use the same settings show above for this task. Please refer to Sequence Generator Pro manual for further information about profiles

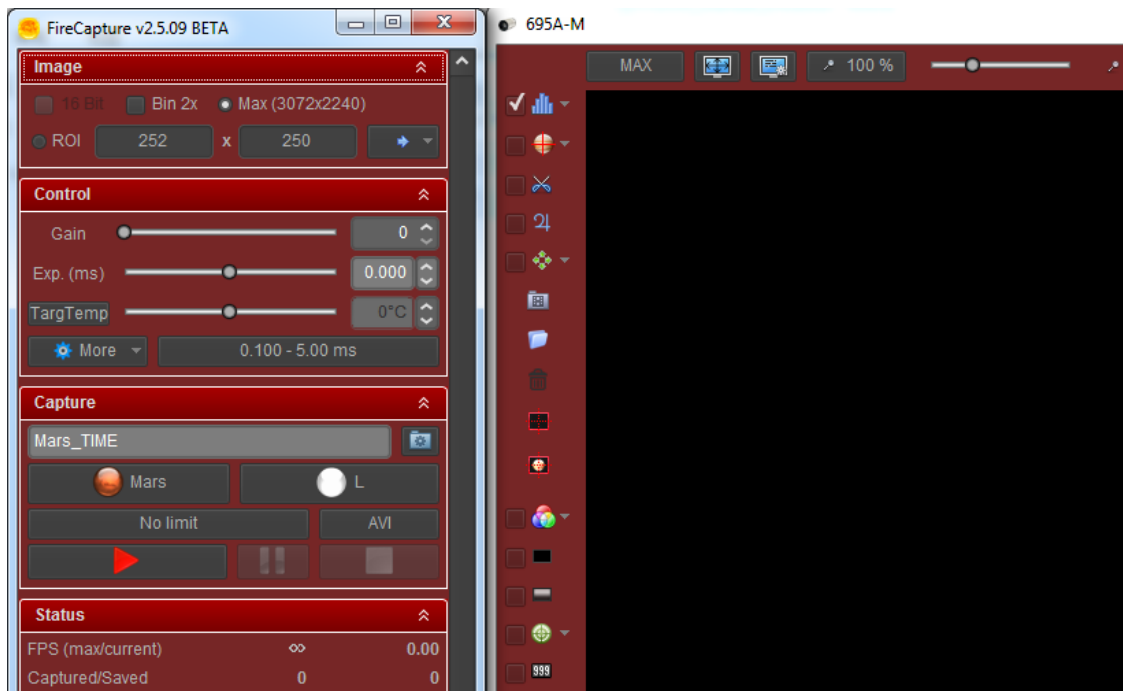
## 05 Use QHY695A in FireCapture

The latest FireCapture supports QHY695A already. Please go to FireCapture website to download its v2.5 BETA (32-bit) version.

By default, it will be installed in the "Documents" folder. After it was installed successfully, navigate to "Document folder", and you will find its installation folder as shown below.

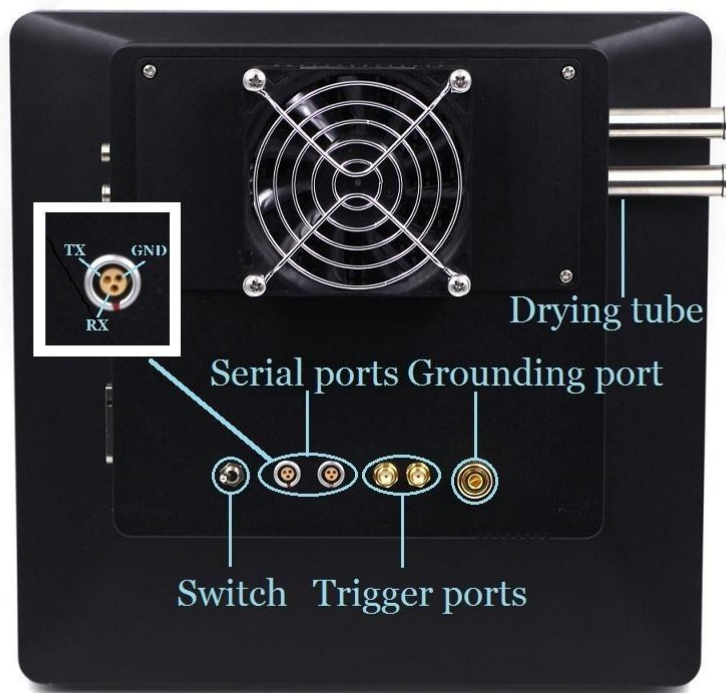


Enter that folder and run "FireCapture.exe", then select QHYCCD camera. And after the loading, you will see the image on FireCapture like shown below.



For detailed and helpful tutorial of this software, please go to its website to check the tutorial section at <http://www.firecapture.de/>

## 06 Peripheral Ports on QHY695A



Note that the camera used in the picture above isn't QHY695A, it is QHY16803A. They have the same peripheral ports.

### Serial ports

QHY695A provides two serial ports, which are connected to the built-in USB hub through FTDI

USB to Serial chip. These two serial ports provide standard RS232 signal level ( $\pm 10V$ ). You can use it to connect your camera to electric focuser and even equatorial mount. But note that this signal level is different from TTL signal level used in EQMOD. If you want to connect your camera to equatorial mount through EQMOD, A signal level convertor between TTL and RS232 is needed.

After you finished installing the drivers, the serial ports drivers should also be installed. You can check its COM number in the device manager in the Windows so that you can use it in your application software.

Serial port cable is optional accessory, and QHYCCD is developing many types of serial port cable. You can contact QHYCCD to know if there's serial port cable you need.

The pin arrangement is already shown in the picture above.

## Trigger ports

There are a trigger-in port (left) and trigger-out port (right). Trigger-in port is a pulse input port. The camera does not start exposure until it receives a pulse from its trigger-in port. Trigger-out port output a indicative signal during the exposure cycle. These two ports use optocoupler. If you want to use these two ports, you can consult QHYCCD for detail method for electric connection.

## Grounding port

Keep the camera in good contact with the earth is the premise that the entire shooting system can work safely and properly. So QHY695A provides a grounding port. This port is connected to the GND on the PCB in the camera, and the GND is also the cathode of the 12V power supply. The grounding wire is included in the package, you can use it to connect the camera to other equipment (Metal case of the equatorial mount or metal case of PC) so that they have common ground. If you have no experience about it, please consult professional electrician.



Caution: Never connect the grounding port to any electrical socket or outlet, otherwise, electrical shock may happen.



Note that the camera used in the picture above isn't QHY695A, it is QHY16803A. They have the same peripheral ports.

## 12V power ports

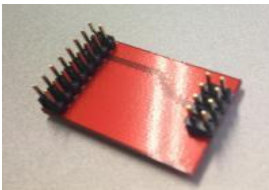
These two ports are connected in parallel, so you can either one of these two as power input port and

use the other one as a power output port for other devices that need 12V power supply.

## USB type-A ports

These two ports are USB expansion ports connected to the built-in USB hub, you can use it to connect with guide camera or other USB devices. This two ports can output 500 mA current. To reduce the power load of the internal circuit, it's recommended to reduce the use of current.

QHY A series Cameras have a USB hub board in them. And these two USB type-A ports along with these two serial ports aforementioned are all branched out by the USB hub board. However, in some particular condition, it results in conflict and the camera will stop working. For example, in the condition where there equatorial mount you are using also has a built-in hub or where you used a USB hub already. In this case, you need to install the USB Hub bypass board (small red- colored board) included in the package.



For detailed instruction of how to install the USB hub bypass board, please check the content in the following link.

After you've installed that, those two USB type-A ports and those two serial ports become invalid.

<http://note.youdao.com/share/?token=D1C38D9FEEDD41D2A8C7D33F9EB74294&gid=7234866#/>

## USB type-B port

This port is used to connect the camera to the computer.

## 07 FAQ

### 1. What's the back focus length of this QHY695A ?

The back focus length is 33mm. If it is used with QHYOAG-S and M42 adapter, the back focus length will be extended to 46mm.

### 2. How to clean the CCD sensor and the optic windows of the camera?

Usually you can use flat fielding calibration to eliminate the shadow resulted from dust. It's not recommended to open the CCD chamber to clean the CCD on your own. Because if you do it in a place where there are still lots of dust, your effort may backfire. Besides, during the process of cleaning, you may scratch the CCD, and you may damage the internal circuit when you open the camera.

QHYCCD provides CCD clean service. The cleaning fee is 100 USD per time and it doesn't include the shipping cost.

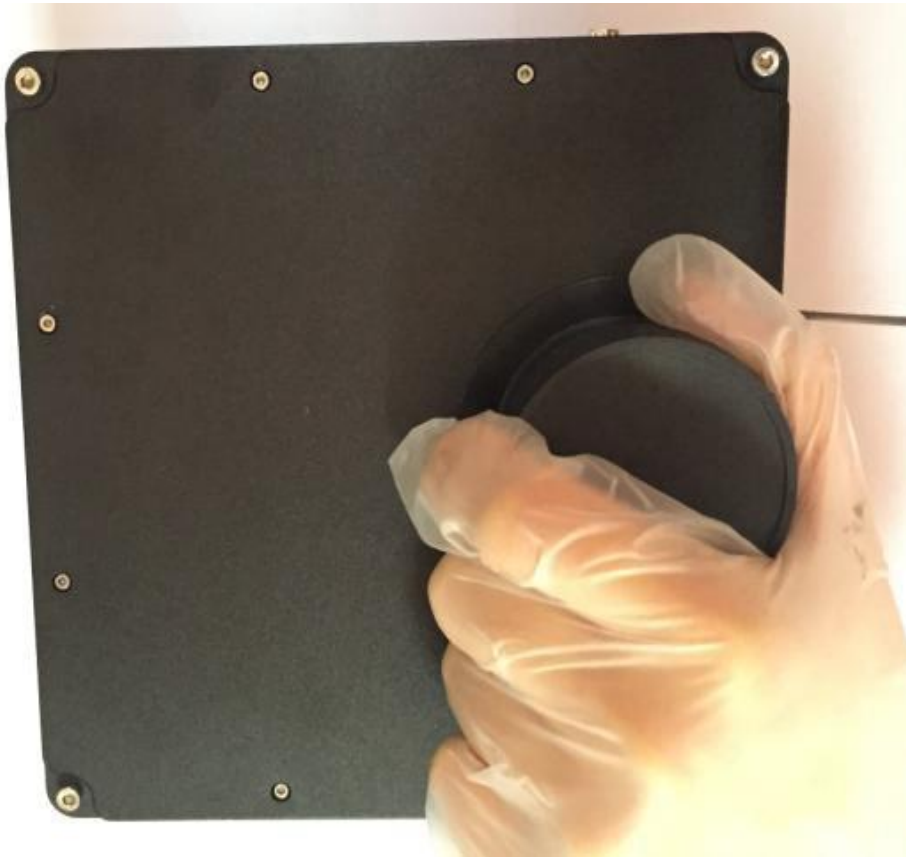
If you really want to clean it on your own, you can follow the instructions below.

**Note that the camera used in instructions are QHY16200A not QHY90A, but they have similar structure. Follow the instruction carefully.**

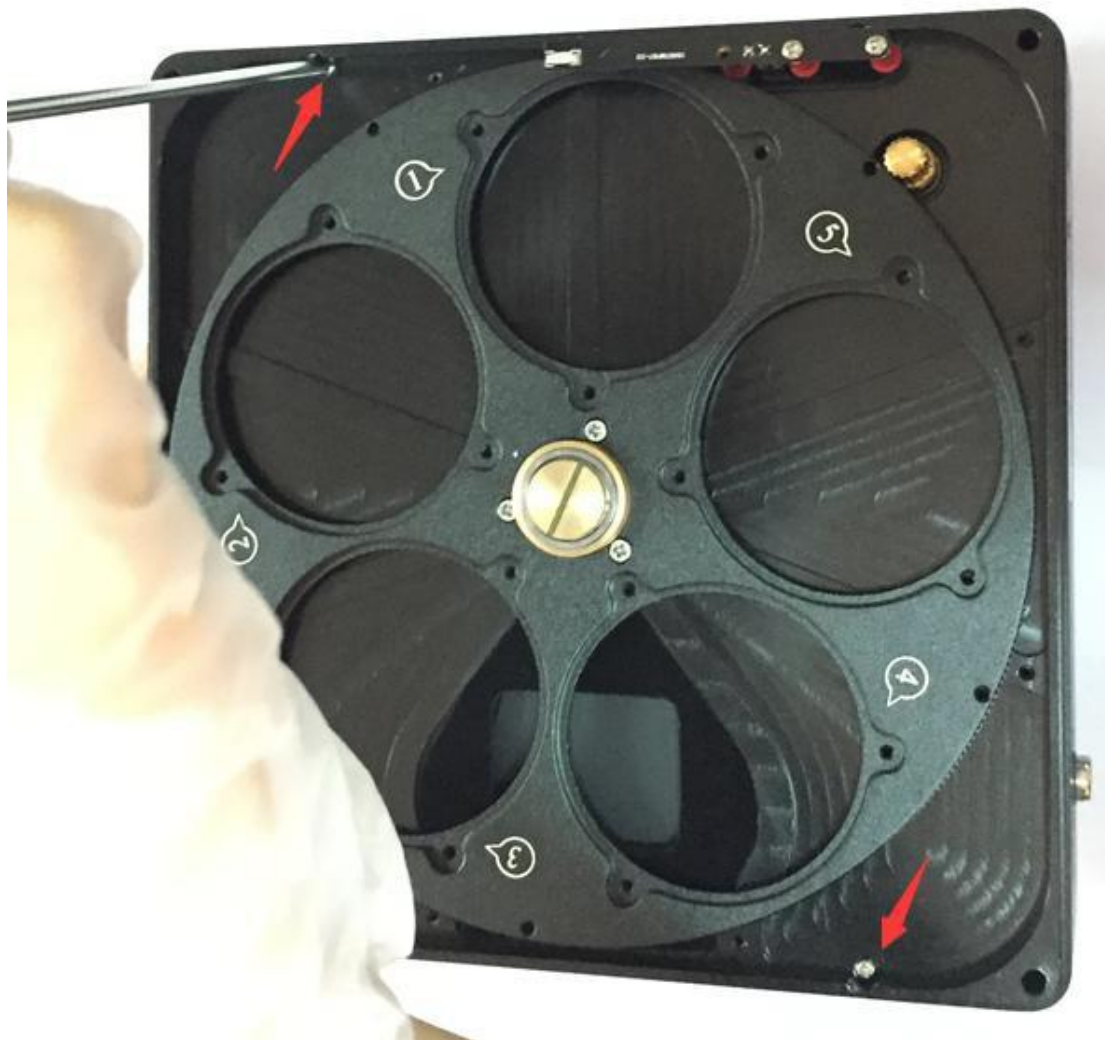
You need to prepare the tools by yourself to open the camera.



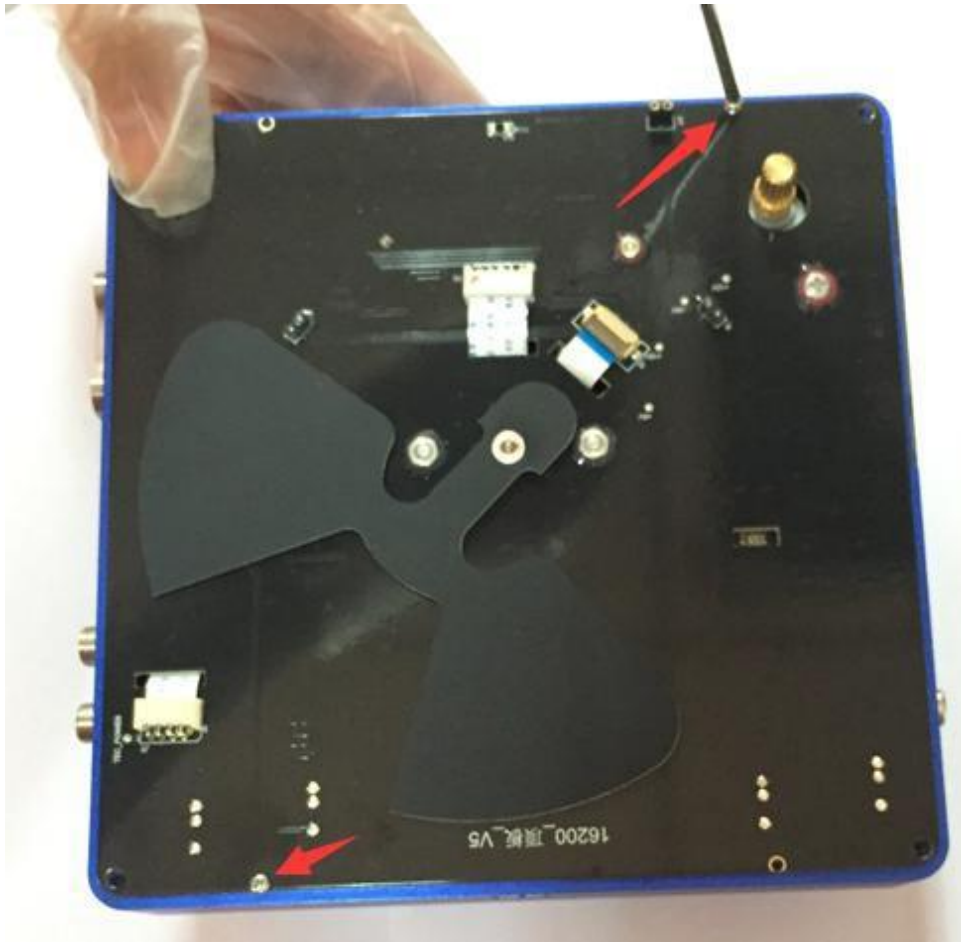
Remove all the screws on front of the camera case and remove the front case



You will see two screws to fix the filter wheel case (the middle layer of the camera). Unscrew them.



You will see the power PCB board. Remove the two screw of the power PCB board

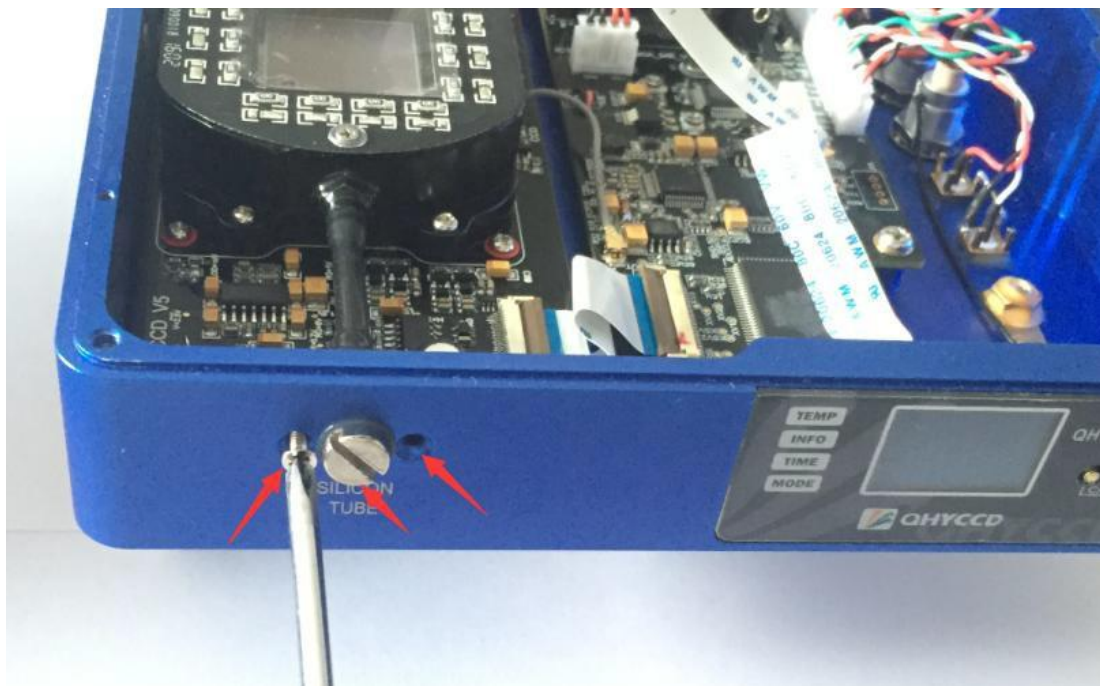


Remove the three cable carefully.

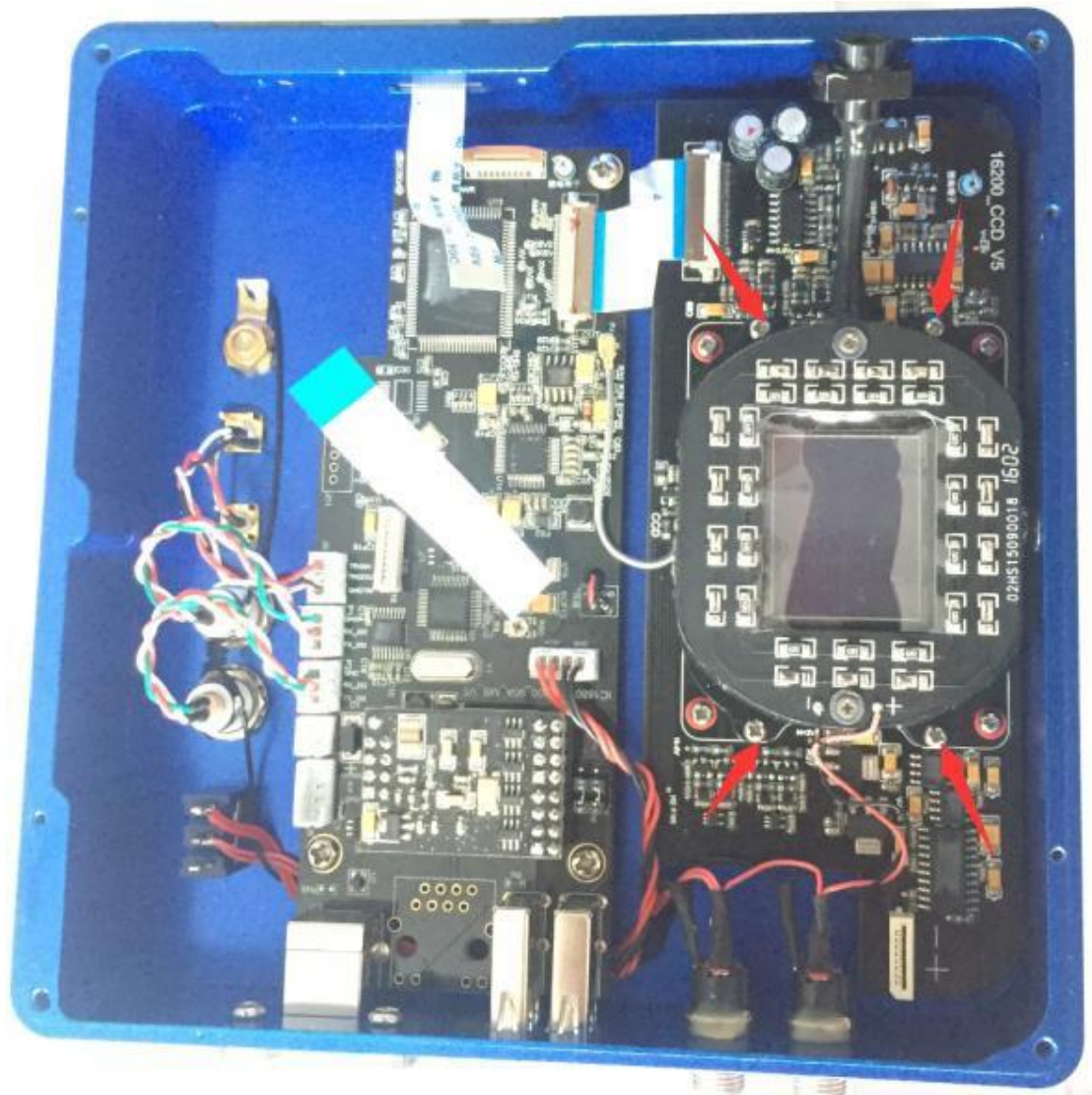
Please use a film to protect the CCD chamber optic window.



The CCD chamber is connecting with the silicone gel tube socket by a rubber pipe. Remove the two screw for the silicone gel socket.



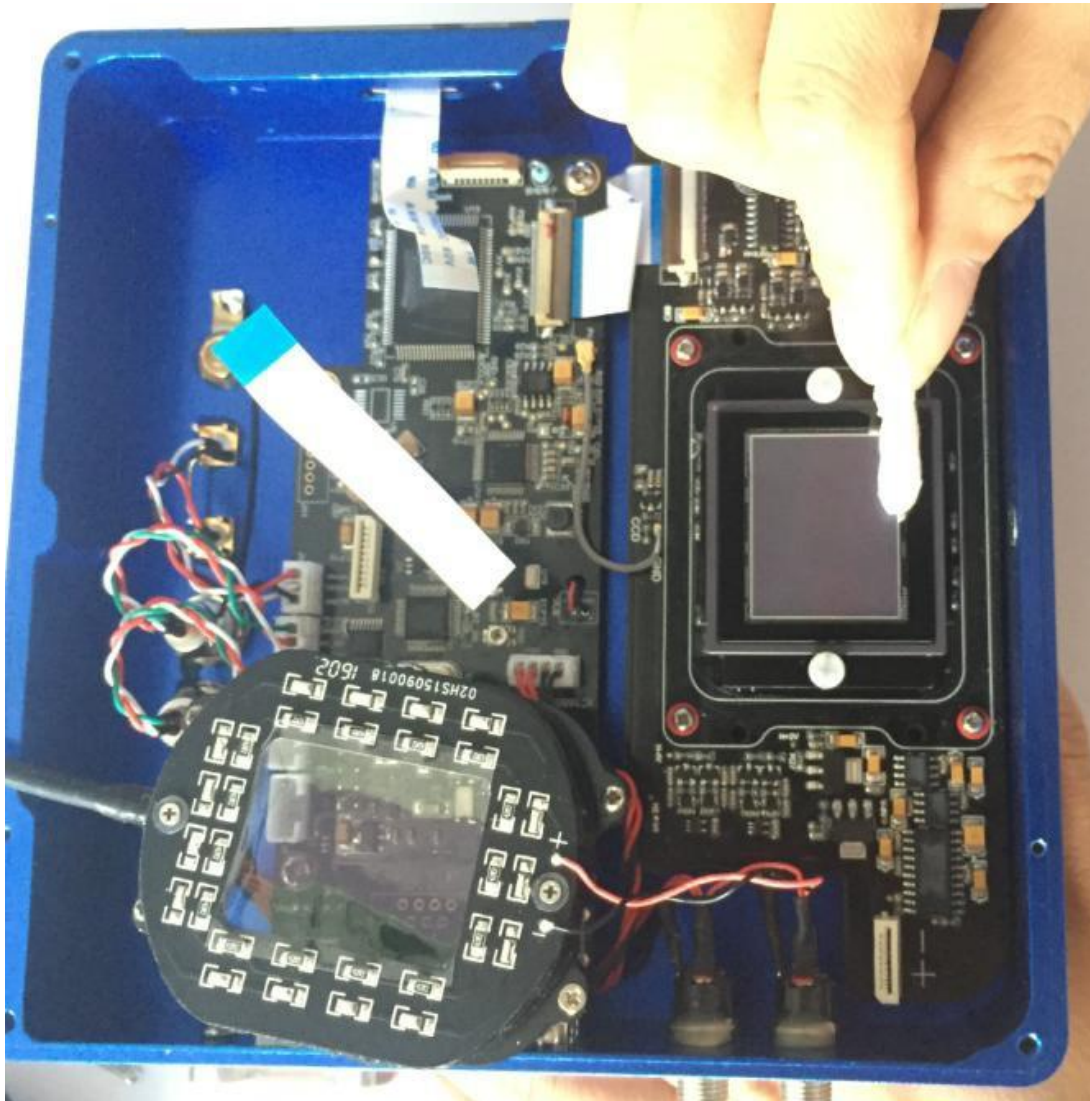
Remove the four screw for the CCD chamber. There is totally eight screws for the CCD chamber. Only remove the four screws pointed by the red arrows in this picture.



Now the CCD chamber is removed. The CCD sensor can be clean here.



The CCD sensor has the AR coating. Please clean it carefully by using the lens paper or another professional tools (like the DSLR sensor clean tools)



### 3. How to protect the cooler in QHY695A?

The cooler in QHY695A can lower the CCD temperature to a value that's almost 40 degrees centigrade below the ambient temperature. So you need to be careful to avoid thermal shock, which refers to when the cooler's temperature rises or fall dramatically, the cooler is subjected to strong internal stress due to contraction principle. Drastic thermal shock can shorten cooler's service life or permanently break it.

So when you begin to adjust the CCD temperature, you should avoid setting "Cooler Power" to its maximum value, and you should gradually turn up the "Cooler Power" value. When you turn off the power, if the "Cooler Power" value is very big, you should gradually turn it down before turn off the power.

#### 4. What's small display on the camera for?

The OLED display is used for display certain formation related to the shooting. It is directly driven by application program. So it may display different information or doesn't display anything at all based on different application programs. Currently all application program don't support this display, please wait for latest application program that supports this display.

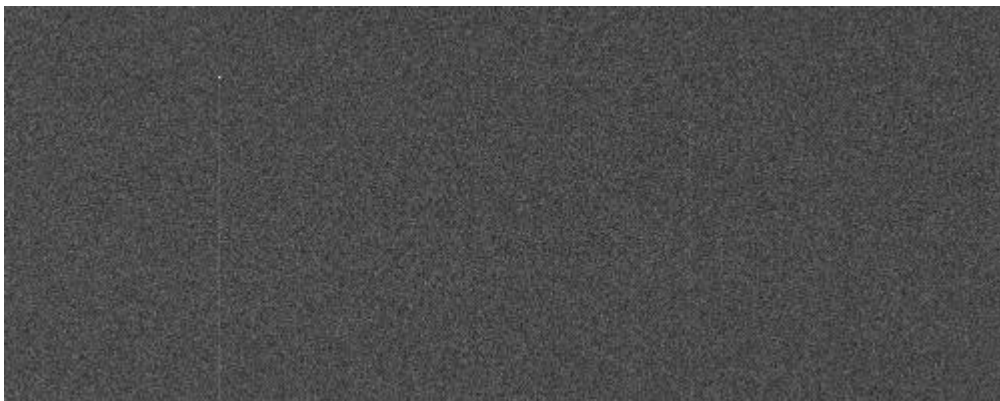
#### 5. What is defect columns?

You may see one or more vertical columns whose top pixel is a bright dot. Normally speaking such columns are not defect column. It is resulted from one pixel with high thermal current. All the pixels below that pixel will be affected by it as thermal current is transferred through that pixel.

This pixel can be removed by dark frame calibration. If they cannot be eliminated entirely, you can solve this problem by using some astronomical image processing software. These software will replace that column with the average value of its surrounding columns.

Aside from the columns we just talked about, you may see one or more black columns which is not full sensitive to the light or it is dim to light. This is the defect column and it cannot be removed by dark frame calibration.

The following image shows a typical "defect" columns caused by a hot pixel, which is not very bright and it is usually not considered as a defect column. It will be gone after dark frame calibration.



The picture below shows a typical defect column with low CTE or zero CTE. This is a defect column. You have to use the some defect tools to remove it.



**6. How to use the QHYOAG that the camera comes with?**

QHYOAG-S and a M42 adapter come with the QHY695A. By six M3 screws you can install them.

The prism of the OAG may have a protect film on front surface. Please remove it before using.

You can use QHY5L-II-M as the guider. Please pay attention that you may remove the front part of QHY5L-II-M to get the back focus short enough for this combination of OAG-S and QHY695A. If you are using other guider. We are not guarantee the back focus is suitable for them due to the very short back focus of the QHY695A.

The thickness of QHYOAG-S is 10mm and the M42 adapter is 3mm. So the totally back focus addon is 13mm. The QHY695A back focus is 33mm. So the total back focus with QHYOAG-S is 46mm.

For more information about QHYOAG, you can check <http://www.qhyccd.com/OAG.html>

## 8. Camera Maintenance

### Drying the CCD Chamber

The CCD sensor is located in a CCD chamber. This chamber is airproof and connect to the socket of the silicone gel tube (drying tube) on one side of the case. If there is moisture and it causes the CCD sensor glass to get dew. You can use the silicone gel tube (drying tube) included in the package to dry it.

Please put the effective silicone gel into the silicone gel tube. Make sure to put a small amount of cotton inside to prevent the silicone gel get into the CCD chamber.

The process of drying usually needs 24 hours.

### Avoid CCD chamber optic window get dew

If the environment humidity is very high, the optic window of the CCD chamber may get dew. The QHY695A has the build-in heat board on this optic window to heat the optic window to avoid it. In most conditions it can take effect.

If the optic window still get dew please try the following method.

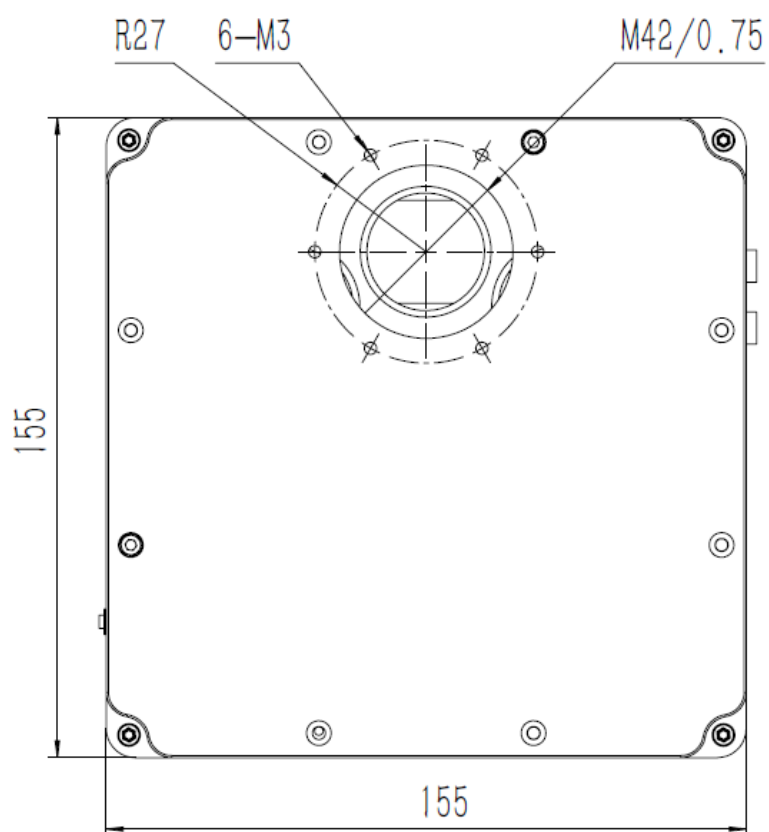
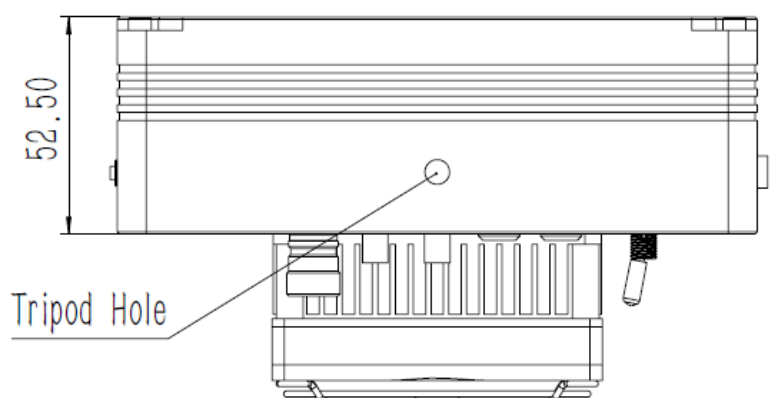
1. Avoid the CCD Camera face down to ground. The cold air is heavy than warm air, if you put the camera facing down to the ground, the cold air is easy to get the optic window and cause it very cold and get dew
2. Increase the temperature of the CCD sensor. You can increase the CCD sensor temperature a little to prevent the optic window get dew.
3. Check if the heat board is working. If the heat board is not working, the optic window easily get dew. Normally the heat board can get about 65-70C in +25C environment. If it is not so warm, the problem can be the damaged heat board. You need to contact QHYCCD to replace one heat board.

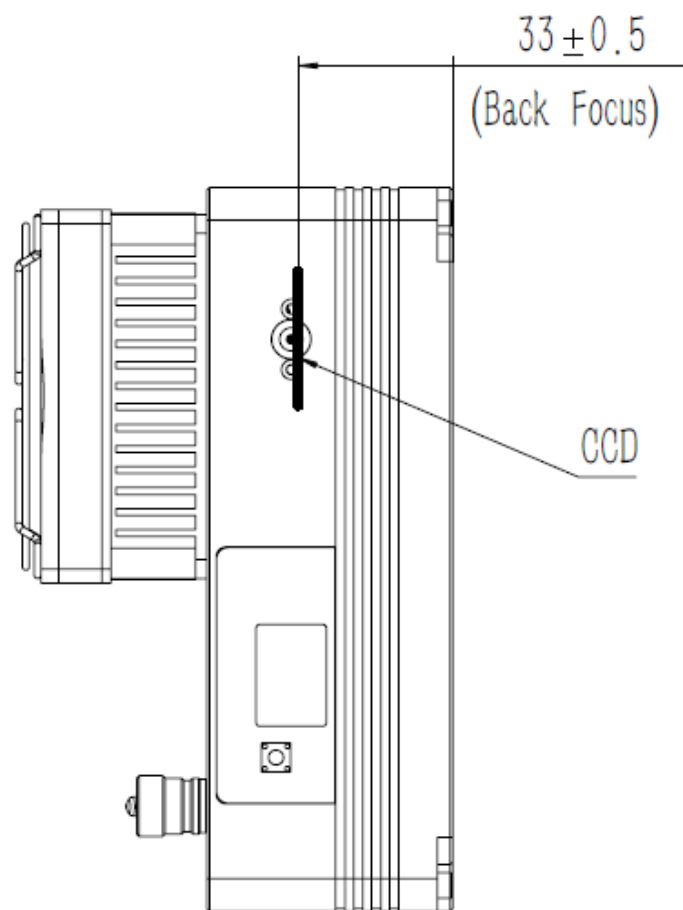
## 9.Specifications

CCD Sensor	ICX695 Mono
Effective Pixels	2758(H)*2208(W), 6mega pixels
Pixel Size	4.54um*4.54um
Effective Area	14.6mm(H)*12.8mm(V), Typical 1 inch
Readout Type	Full Frame CCD, Progressive Scan
FullWell	15-20ke-
ADC	16bit
Readout Noise	Typical 4e- to 5e-
System Gain	appox 0.3e/ADU
QE Peak	79%
Binning	1x1,2x2,4x4
Exposure Time	1ms-10000sec
TEC	2 stage
Cooling	Typical -40 below Ambient temperature
Shutter	Butterfly Mechanical Shutter with Uniform illumination
Moisture Control	Air Connector for removable silicon gel tube Heat board for optic window of airproof CCD chamber
Built-in Filter Wheel	7 position unmounted 36mm or 8 position 1.25inch
OAG interface	six M3 screw holes for QHYOAG
Telescope Interface	M42/0.75 inner screw
Power consumption	0% cooling 8W   50% cooling 16.5W   100% cooling 27W
Weight	1550g

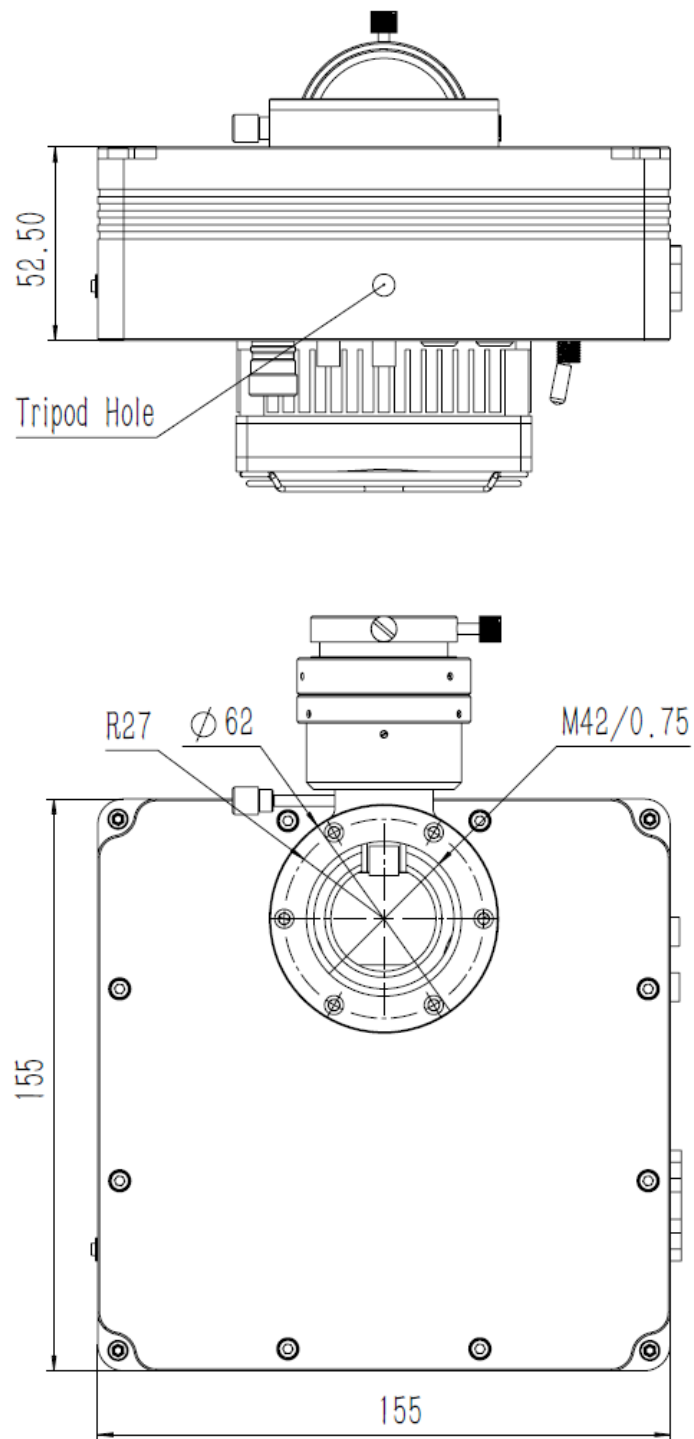
## 10. Mechanical Dimensions

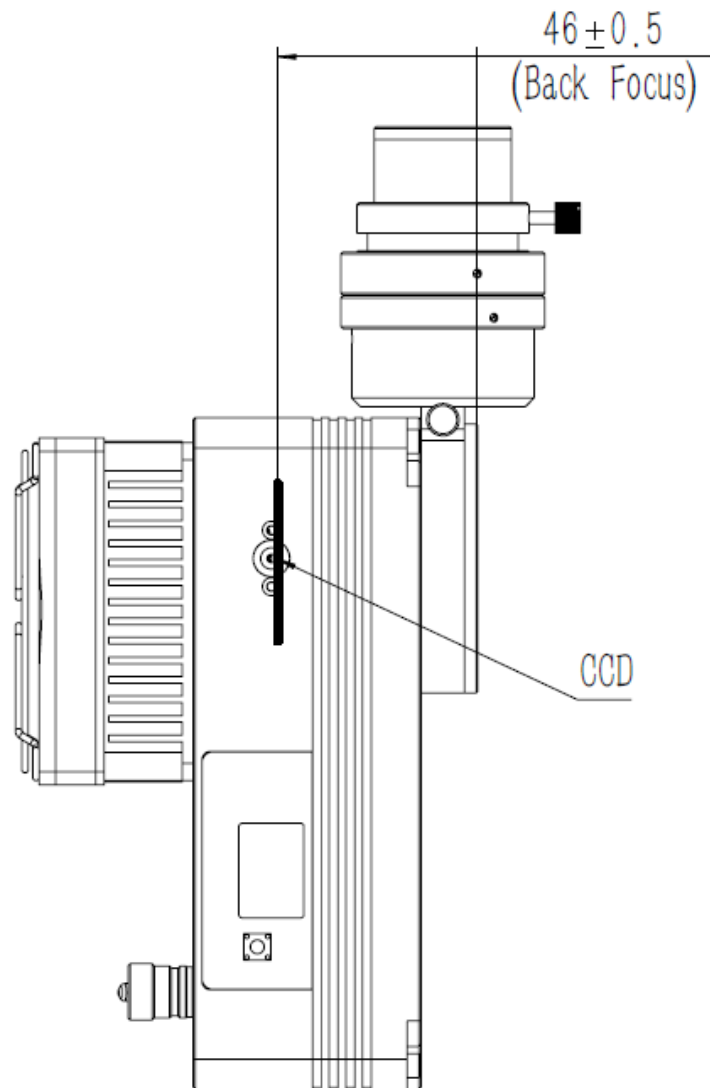
Mechanical drawing without OAG-S





## Mechanical drawing with OAG-S





## 11. Revision history

Date of Change	Revision	Content of Change
July 13, 2017	1.0	First edition